

SUMTER TOWNSHIP

Each township has six files containing six sections in each, and one file containing all 36 sections.

Sumter01to06.pdf
Sumter07to12.pdf
Sumter13to18.pdf
Sumter19to24.pdf
Sumter25to30.pdf
Sumter31to36.pdf
SumterAll36.pdf

The points are listed starting with the point above the SE corner and continuing in a counter-clockwise rotation around the section. This normally begins with the East point, Northeast, then North, but may also include Witness Corners, and/or Meander Corners.

Definitions

Witness Corner: A witness corner “stands in” when the true corner cannot be monumented or occupied because of difficult terrain or obstruction of the corner sight. The witness corner must be on the section line and is usually 5 or 10 chains away from the true corner.

Meander Corner: The intersection of a township, range, or section line and the banks of a navigable stream or meandering body of water.

EAST QUARTER corner, Section 31, Township 115 North, Range 29 West

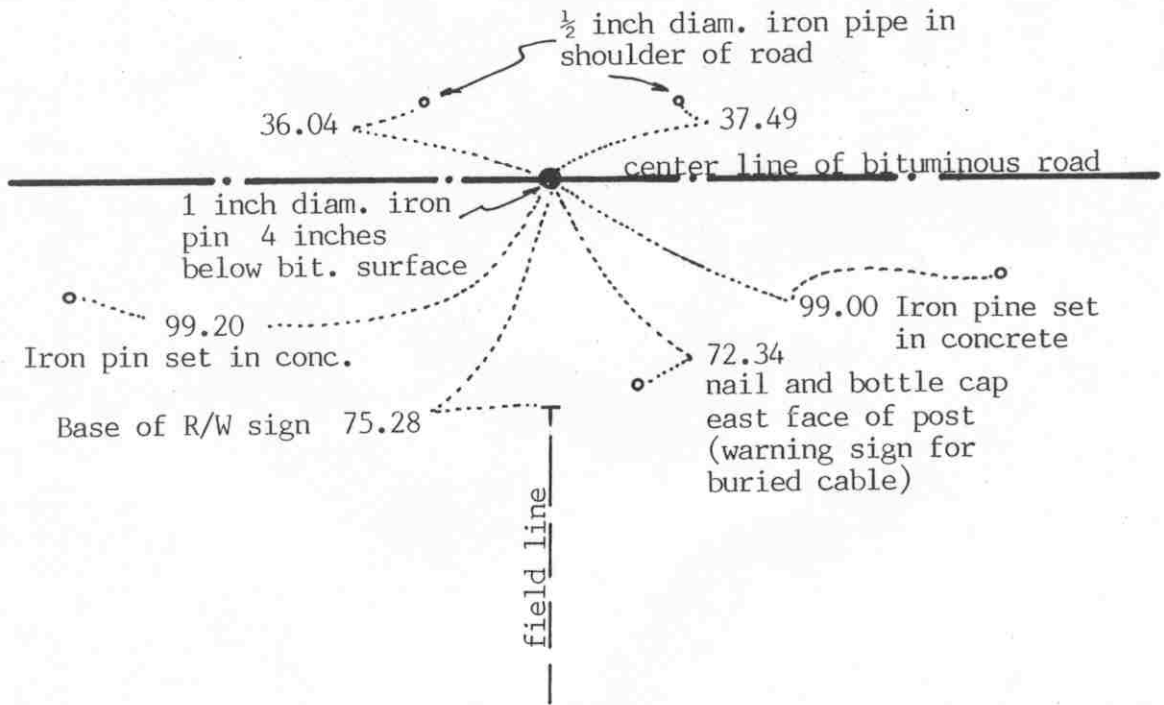
Certificate of Location of Government Corner

SKETCH OF REFERENCE TIES (NO SCALE)



SECTION 31

SECTION 32



Statement of evidence relative to this corner location on sheet 2

I hereby certify that this document was prepared by me or under my direct supervision.

Willard Pellinen

Willard Pellinen
McLeod County Surveyor
License No. 9626

Date November 11, 1992

OFFICE OF THE COUNTY RECORDER
MCLEOD COUNTY, MINNESOTA.

I hereby certify that this document was filed in this office at 3 o'clock P.M. on the 17th day of November, 1992.

Carmen Ottilie Mulder, County Recorder

By _____, Deputy

Document No. 248897

Certificate of Location of Government Corner

September, 1856. D.L.Langton of the General Land Office originally established this corner. He set a post, raised a mound of earth, drove charred stake and planted locust seeds at the corners of the mound.

1959. The Minnesota Highway Department found a 1 inch diameter iron pipe at the intersection of fence lines south and west.

1968. The Highway Department set an iron pin at the location of the found iron pipe after the new highway was constructed. It was on the center line station P.O.T. 1427+57.9.

April 4, 1973. McCombs Knutson Associates (Dickman Knutson, county surveyor) found the iron pin and took reference ties.

November 10, 1992. We found the reference ties all destroyed. We found the iron pin down 4 inches below the bituminous surface and set new reference ties.

The iron pin is accepted as marking the location of the quarter corner. It fits long standing occupation lines, the old fence intersection and it perpetuates the location of an older monument, the iron pipe found by the highway department.

NORTHEAST corner, Section 31, Township 115 North, Range 29 West

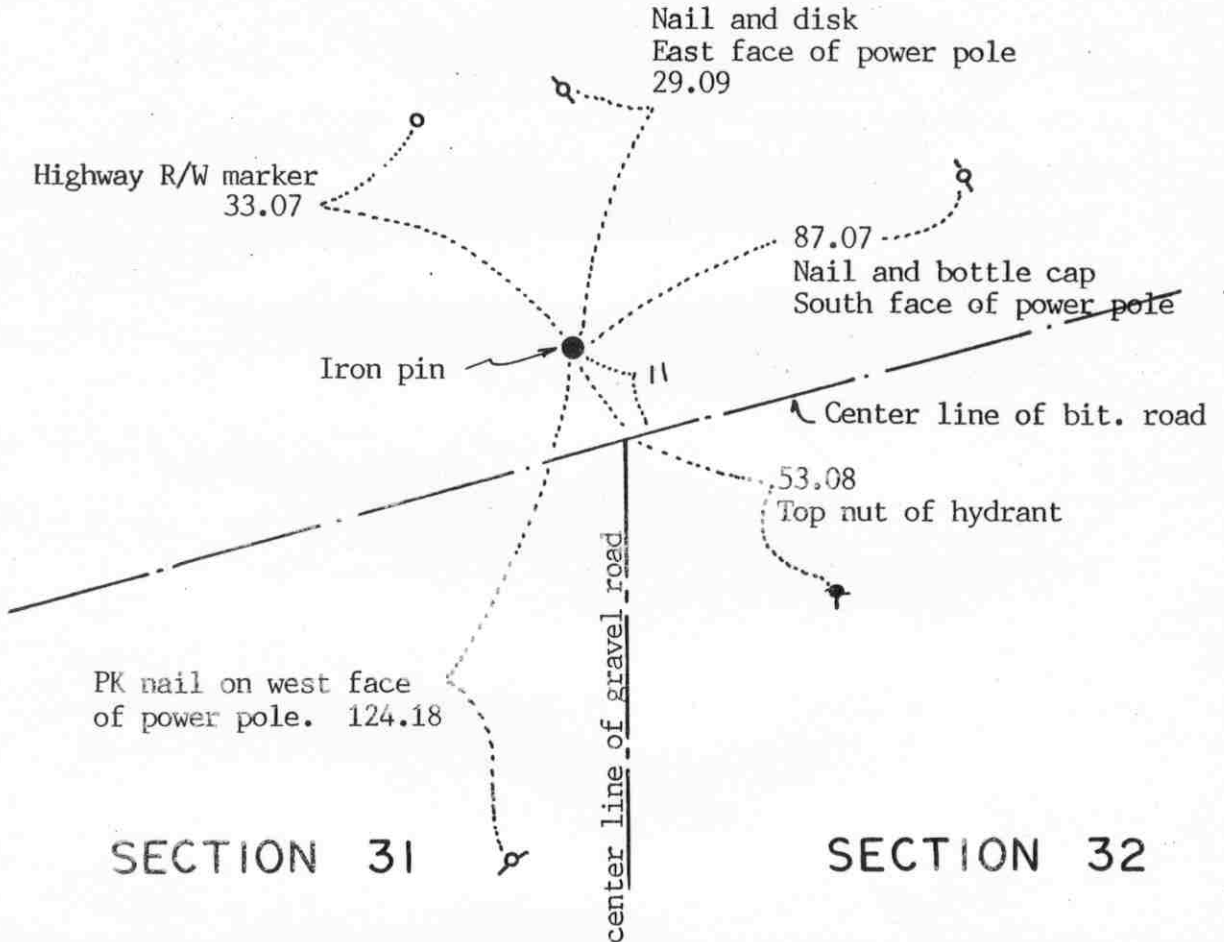
Certificate of Location of Government Corner

SKETCH OF REFERENCE TIES

(NO SCALE)

SECTION 30

SECTION 29



Statement of evidence relative to this corner location on sheet 2

I hereby certify that this document was prepared by me or under my direct supervision.

Willard Pellinen

Willard Pellinen
McLeod County Surveyor
License No. 9626

Date July 19, 1994

OFFICE OF THE COUNTY RECORDER
MCLEOD COUNTY, MINNESOTA.

I hereby certify that this document was filed in this office at 9 o'clock A. M. on the 16th day of August, 1994.

Carman Estelle Mulder, County Recorder

By _____, Deputy

Document No. 261298

NORTHEAST corner, Section 31, Township 115 North, Range 29 West

Certificate of Location of Government Corner

September, 1856. Denis L. Langton of the General Land Office set a post at the corner and marked 3 oak trees for bearing trees.

1967. Dickman Knutson, county surveyor, found an iron pin 11 feet northwesterly of the center line of old Highway No. 212. One of his reference ties was to a highway right of way monument, 33 feet northerly of the iron pin. 1929 Minnesota Highway right of way map shows this right of way monument to be 33 feet northerly of the section corner. This iron pin has been used by surveyors as the quarter corner.

October 28, 1977. Knutson again took reference ties to the iron pin.

April 1, 1994. We checked the reference ties to the corner.

CERTIFICATE OF LOCATION OF GOVERNMENT CORNER

North Quarter Corner of Section 31, Township 115 N., Range 29 W., 5th P.M.

STATE OF MINNESOTA, County of McLeod

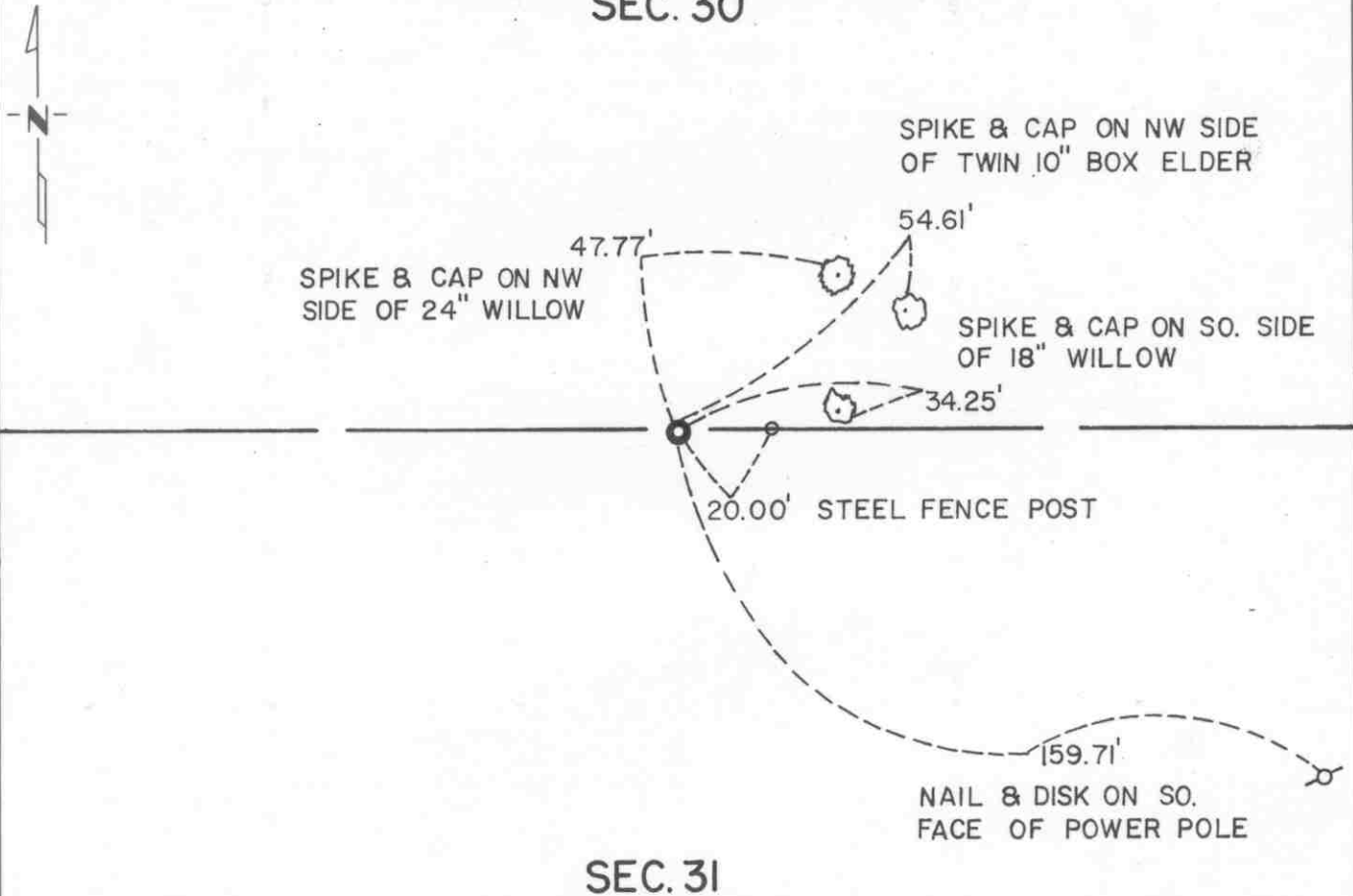
At the corner location shown on the sketch:

On May, 1990 found a cast iron monument about 2 feet below ground surface
DATE

left monument as found, lowered monument, removed monument (explain)

On _____ placed a _____
DATE

SKETCH OF REFERENCE TIES SEC. 30



SEC. 31

Statement of evidence relative to this corner location is on back of page.

I hereby certify that this document and the data contained herein was prepared by me or under my direct supervision.

Robert J. Jones 8-19-91
SIGNATURE DATE

Registration No. 11864
 Land Surveyor, Professional Engineer
 County Surveyor, County Engineer

OFFICE OF THE COUNTY RECORDER
 County of McLeod

I hereby certify that this document was filed in the Co. Recorders office at 2 P.M. on the 18th day of Aug A.D., 1991

County Recorder Carmen Ostlie
 By _____, Deputy

DOCUMENT NO. 241014

Statement of Evidence:

North Quarter Corner Section 31, T 115 N, R 29 W

- 1856 - The original Public Land Survey was completed by Denis S. Langton. A wood post was set over a charred stake to mark the corner. Locust seeds were planted at the corners of the mound.
- 1974 - Dickman Knutson, McLeod County Surveyor, found a 1.5" diameter iron pipe and replaced it with a cast iron monument set 2 feet below the ground so it would not be plowed out.
- 1991 - A Mn/DOT survey crew recovered the cast iron monument about 2 feet below the ground.

The cast iron monument is accepted as the corner location because it perpetuates older monumentation and because it is only 0.34 feet west and 0.18 feet south of the lost location.

For additional information, contact the Mn/DOT Surveys Section at Willmar, Mn 56201.

NORTHEAST corner, Section 36, Township 115 North, Range 30 West

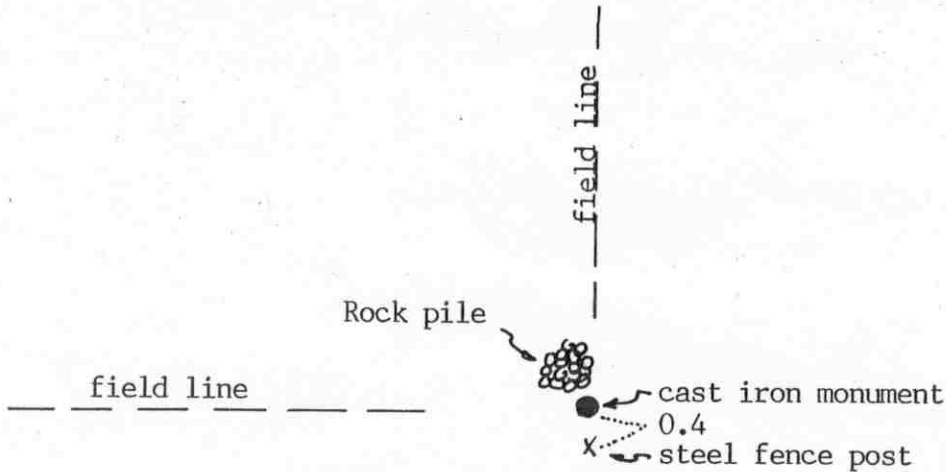
Certificate of Location of Government Corner

SKETCH OF REFERENCE TIES

(NO SCALE)

SECTION 25
T. 115 R. 30

SECTION 30
T. 115 R. 29



SECTION 36
T. 115 R. 30

SECTION 31
T. 115 R. 29

Statement of evidence relative to this corner location on sheet 2

I hereby certify that this document was prepared by me or under my direct supervision.

Willard Pellinen

Willard Pellinen
McLeod County Surveyor
License No. 9626

Date July 19, 1994.

OFFICE OF THE COUNTY RECORDER
MCLEOD COUNTY, MINNESOTA.

I hereby certify that this document was filed in this office at 9 o'clock A. M. on the 16th day of August, 1994.

Carmen Stie Mulder, County Recorder

By _____, Deputy

Document No. 261304

NORTHEAST corner, Section 36, Township 115 North, Range 30 West

Certificate of Location of Government Corner

July, 1855. John Ryan of the General Land Office first established this corner. He set a post, deposited charcoal, dug pits and trench and planted osage orange seeds at the corners of the mound of earth which he built.

1896. I. C. Christlieb, county surveyor, set a 2½ inch square iron monument at the corner.

1970. Dickman Knutson, county surveyor, found the iron bar set by Knutson and replaced it with a McLeod County cast iron monument and took reference ties.

April 1, 1994. We found the monument in good condition and checked the reference ties.

CERTIFICATE OF LOCATION OF GOVERNMENT CORNER

East Quarter Corner of Section 36, Township 115 N, Range 30 W, 5th P.M.

STATE OF MINNESOTA, County of McLeod

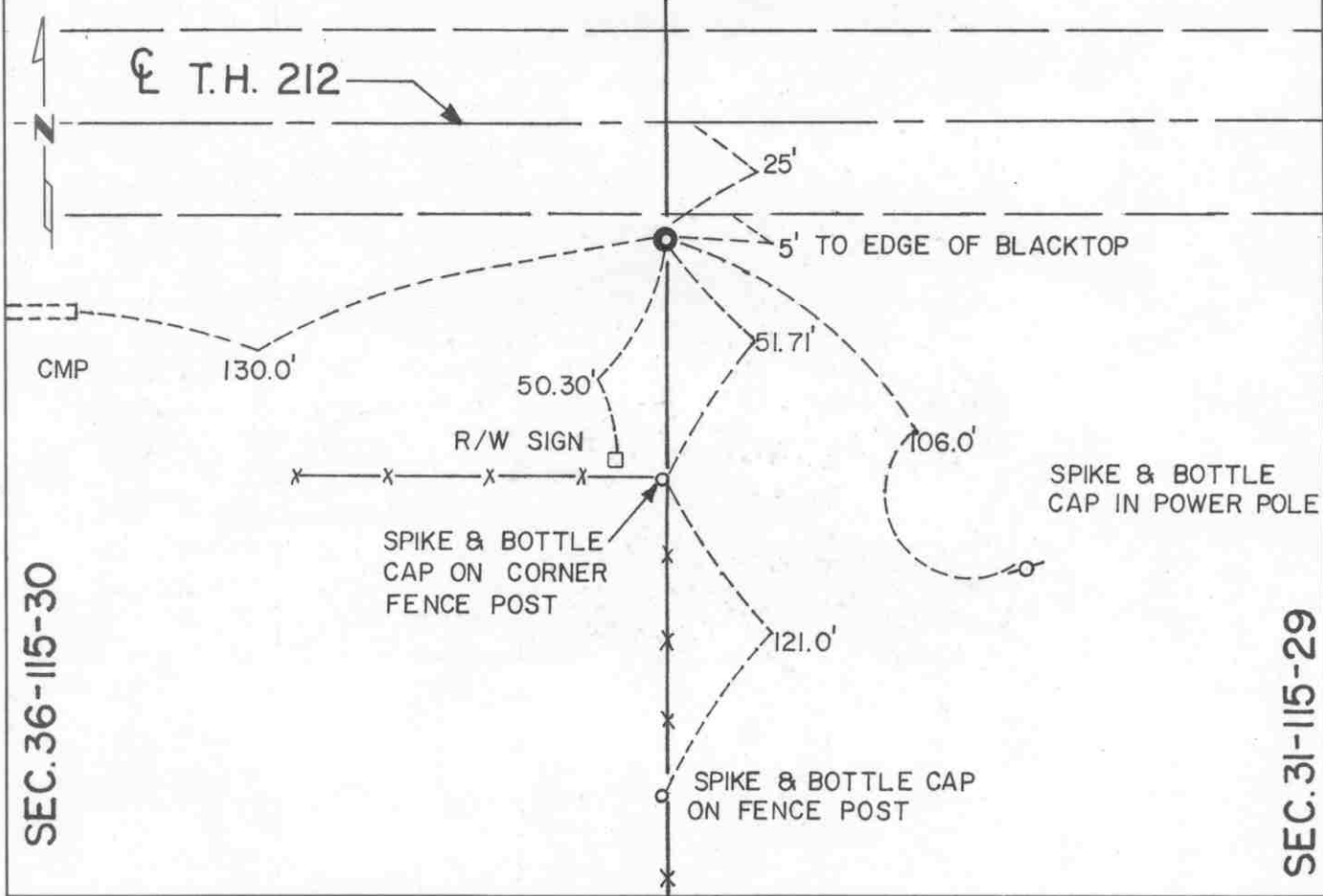
At the corner location shown on the sketch:

On Apr. 16, 1990 found a cast iron monument a few inches below the ground
DATE In the south shoulder slope of T.H. 212

left monument as found, lowered monument, removed monument (explain)

On _____ placed a _____
DATE

SKETCH OF REFERENCE TIES



SEC. 36-115-30

SEC. 31-115-29

Statement of evidence relative to this corner location is on back of page.

I hereby certify that this document and the data contained herein was prepared by me or under my direct supervision.

Robert Gans 8-19-91
SIGNATURE DATE

Registration No. 11864

Land Surveyor, Professional Engineer
 County Surveyor, County Engineer

OFFICE OF THE COUNTY RECORDER
County of McLeod

I hereby certify that this document was filed in the Co. Recorders office at 2 P .M. on the 18th day of Aug A.D. 1991

County Recorder Norman Ostlie

By _____, Deputy

DOCUMENT NO. 241036

Statement of Evidence:

East Quarter Corner Section 36, T 115 N, R 30 W

- 1855 - The original Public Land Survey of the township line was completed by John Ryan. A wood post was set over a deposit of charcoal in a dirt mound to mark the corner. Trenches and pits were dug to build the mound. Osage orange was planted at the corners of the mound.
- 1896 - I. C. Christlieb, McLeod County Surveyor, set an iron monument to mark the corner.
- 1929 - The Minnesota Highway Department right of way map for T.H. 212 depicts the corner to be near the centerline of an east/west road about 420 feet southerly of the old T.H. 212 centerline P.O.C. 1376+14 as scaled on the map.
- 1959 - Minnesota Highway Department survey notes do not indicate whether anything was found at this corner.
- 1970 - Dickman Knutson, McLeod County Surveyor, found a 1/2" diameter iron pin about 2 feet below the ground and set a cast iron monument over it. It was located about 25 feet south of the centerline of T.H. 212 and in line with a fence line to the south.
- 1990 - R. C. Jones, Registered Land Surveyor with Mn/DOT, found the McLeod County cast iron monument a few inches below the surface of the south shoulder slope of T.H. 212.

The cast iron monument is accepted as the corner location because it is in line with a fence line to the south, it is about 425 feet southerly of old T.H. 212 P.O.C. 1376+14, it is 25 feet south of the centerline of present T.H. 212 P.O.T. 1375+12.4, and it is 0.3 feet south and 6.12 feet west of the lost location.

For additional information, contact the Mn/DOT Surveys Section at Willmar, Mn 56201.

RECORDED

the document was filed in
Mn. on the

AD 19

Deputy

CERTIFICATE OF LOCATION OF GOVERNMENT CORNER

Northeast Corner of Section 1, Township 114 N, Range 30 W, 5th P.M.

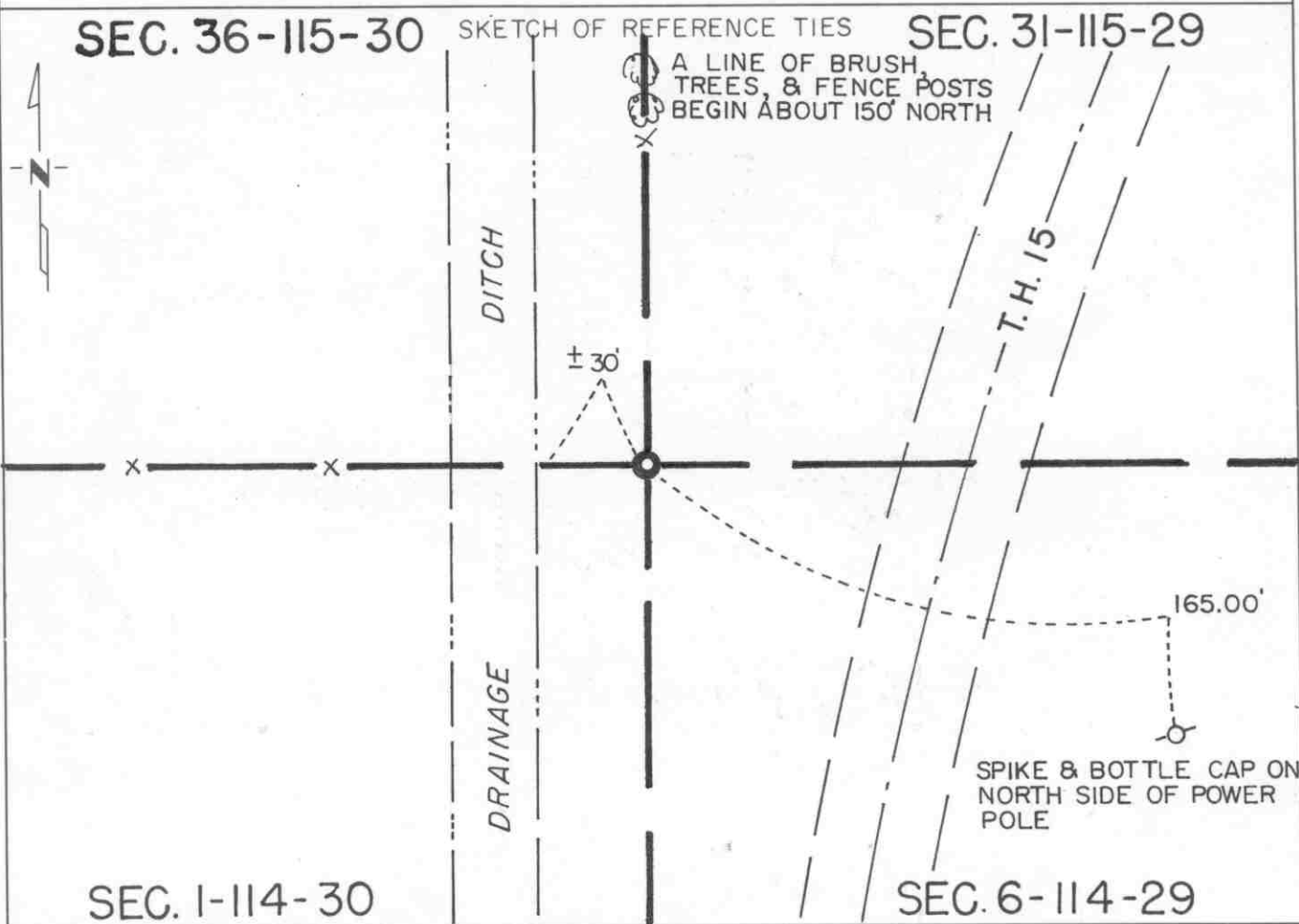
STATE OF MINNESOTA, County of McLeod

At the corner location shown on the sketch:

On June 13, 1991 found a cast iron monument at ground surface
DATE

left monument as found, lowered monument, removed monument (explain)

On _____ placed a _____
DATE



Statement of evidence relative to this corner location is on back of page.

I hereby certify that this document and the data contained herein was prepared by me or under my direct supervision.

Robert Jones 8-26-91
SIGNATURE DATE

Registration No. 11864

Land Surveyor, Professional Engineer
 County Surveyor, County Engineer

OFFICE OF THE COUNTY RECORDER
 County of McLeod

I hereby certify that this document was filed in the Co. Recorders office at 2 P. .M. on the 18th day of Sep, D., 1991

County Recorder Carmen O'Brien

By _____, Deputy

DOCUMENT NO. 240996

Statement of Evidence:

Northeast Corner Section 1, T 114 N, R 30 W

- 1855 - The original Public Land Survey of the township line was completed by John Ryan. A wood post was set over a deposit of charcoal in a dirt mound. Trenches and pits were dug to build the mound. Osage orange was planted at the corners of the mound.
- 1896 - I. C. Christlieb, McLeod County Surveyor, set a 2 1/2" square iron monument to mark the corner.
- 1944 - The Minnesota Highway Department right of way map from this era shows the corner to be 13.5 feet west of P.O.S.T. 645+69.1.
- 1959 - Minnesota Highway Department survey notes show that a 2" square iron was found one foot below ground at the intersection of fence lines north and west. It was located 2702 feet southerly of T.H. 212 P.O.T. 1375+11.5.
- 1970 - Dickman Knutson, McLeod County Surveyor, found the 2 1/2" square iron monument and set a McLeod County cast iron monument.
- 1990 - A Mn/DOT survey crew recovered the cast iron monument and tied it into the McLeod County Coordinate System.
- 1991 - R. C. Jones, Registered Land Surveyor with Mn/DOT, found the cast iron monument at the ground surface.

The cast iron monument is accepted as the corner location because it closely fits a field division to the west, it fits a fence line across T.H. 15 to the east, it is nearly in line with a line of small trees and brush to the north, it fits the location shown on the 1944 right of way map for T.H. 15 within 2 or 3 feet, and it is located 2701.00 feet southerly of T.H. 212 P.O.T. 1375+11.5, which fits the 1959 M.H.D. survey very well.

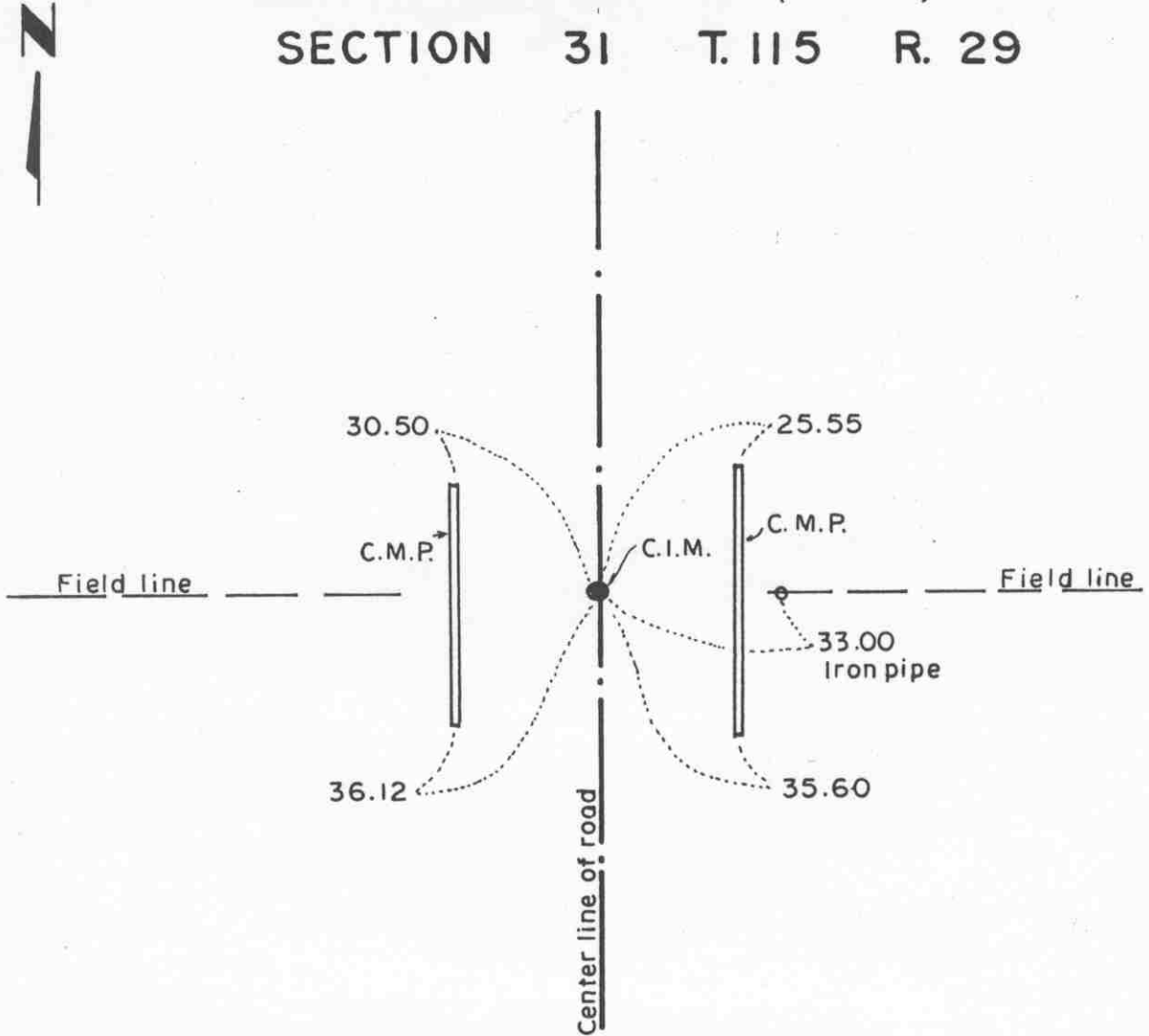
For additional information, contact the Mn/DOT Surveys Section at Willmar, Mn 56201.

Certificate of Location of Government Corner

North Quarter corner, Section 6, Township 114 North, Range 29 West

SKETCH OF REFERENCE TIES (NO SCALE)

SECTION 31 T. 115 R. 29



SECTION 6 T. 114 R. 29

Statement of evidence relative to this corner location on sheet 2

I hereby certify that this document was prepared by me or under my direct supervision.

Willard Pellinen
Willard Pellinen
McLeod County Surveyor
License No. 9626.

Date May 15, 1995

OFFICE OF THE COUNTY RECORDER
MCLEOD COUNTY, MINNESOTA

I hereby certify that this document was filed in this office at 9 o'clock A.M. on the 18th day of May 19 95.

Carmen (Dorlie) Mulder, County Recorder

By _____, Deputy.

Document No. 265795

Certificate of Location of Government Corner
North Quarter Corner, Section 6, Township 114 North, Range 29 West

1855. John Ryan of the General Land Office established this corner. He set a post, deposited charcoal, dug pits and trench, built mound and planted osage orange seeds at the corners of the mound.

1966. Roy Hansen, county surveyor, found a half inch diameter iron pipe in the center of the north-south road, in line with a field line to the east.

1970. Dickman Knutson, county surveyor, excavated for the corner, John Tupa from Hutchinson with a back hoe. Down 3 feet below the surface of the road he found a half inch diameter 18 inch long iron pipe. He took reference ties and dug a hole 8 feet by 4 feet by 4 feet deep but found no other evidence of the government corner. The found iron pipe was in the center line of the north-south road, in line with a field line to the east.

1974. Knutson set a McLeod County cast iron monument and took new ties.

1990. A Mn/Dot survey crew found the top of the monument was broken off but the base of the monument was ok. They set a 2 inch square telspar tube with a Mn/Dot cap at the center of the base of the broken cast iron monument. A 3/4 inch diameter by 24 inch long iron pin was set in the center of the tube.

Certificate of Location of Government Corner

Northeast corner, Section 6, Township 114 North, Range 29 West

SKETCH OF REFERENCE TIES (NO SCALE)

T. 115 N. R. 29 W.

SECTION 31

SECTION 32



Nail and bottle cap in north face of 20 inch box elder. 24.32

Cast iron monument

Fence

14.10
Nail and bottle cap in west face of box elder.

18.20
Nail and bottle cap in north face of box elder.

Fence

SECTION 6

SECTION 5

T. 114 N. R. 29 W.

Statement of evidence relative to this corner location on sheet 2

I hereby certify that this document was prepared by me or under my direct supervision.

Willard Pellinen
Willard Pellinen
McLeod County Surveyor
License No. 9626.

Date Sept. 11, 1995

OFFICE OF THE COUNTY RECORDER
MCLEOD COUNTY, MINNESOTA

I hereby certify that this document was filed in this office at 9 o'clock A. M. on the 14th day of Sept 19 95.

Carmen Ostlie Quider, County Recorder

By _____, Deputy.

Document No. 268017

Certificate of Location of Government Corner

Northeast Corner, Section 6, Township 114 North, Range 29 West

1855. John Ryan of the General Land Office established this corner. He set a post, dug pits and trench, built mound and planted osage orange seeds at the corners of the mound.

Old survey notes show an iron under a stone at the corner.

January 4, 1966. Roy Hansen, county surveyor, found an iron pipe at the corner.

1970. Dickman Knutson, county surveyor, replaced the iron pipe with a McLeod County cast iron monument and took available reference ties.

December 15, 1994. The monument set by Knutson is accepted as marking the correct location of the government corner. It fits long standing occupation lines and it perpetuates the location of an older monument.

EAST QUARTER corner, Section 32, Township 115 North, Range 29 West

Certificate of Location of Government Corner

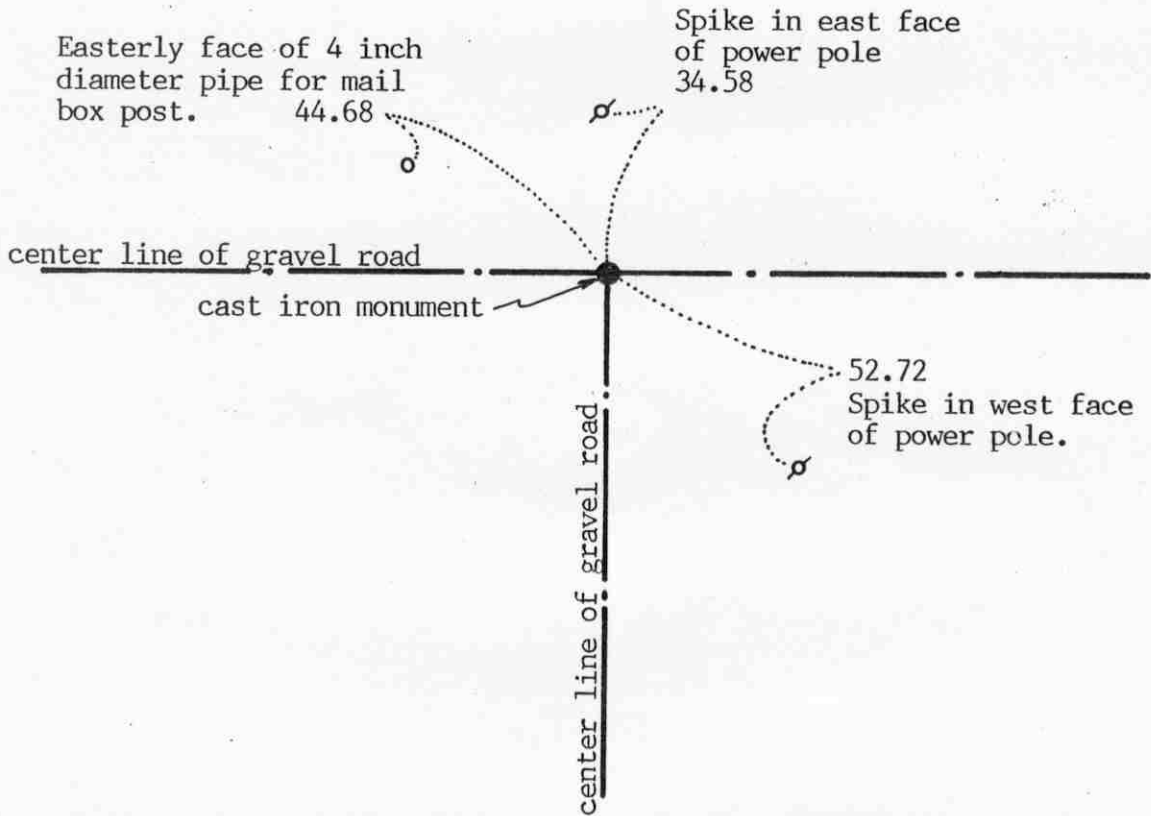
SKETCH OF REFERENCE TIES

(NO SCALE)



SECTION 32

SECTION 33



Statement of evidence relative to this corner location on sheet 2

I hereby certify that this document was prepared by me or under my direct supervision.

Willard Pellinen

Willard Pellinen
McLeod County Surveyor
License No. 9626

Date July 26, 1994.

OFFICE OF THE COUNTY RECORDER
MCLEOD COUNTY, MINNESOTA.

I hereby certify that this document was filed in this office at 9 o'clock A. M. on the 16th day of August, 1994.

Carman Betty Mulder, County Recorder

By _____, Deputy

Document No. 261300

Certificate of Location of Government Corner

September, 1856. Denis L. Langton of the General Land Office first established this corner. He set a post, raised mound of earth, drove charred stake, and planted locust seeds at the corners of the mound.

1976. Adjoining land owners stated the east-west road was built on the east-west quarter lines of Sections 32 and 33 and that the north south road was on the section line.

August 26, 1976. Dickman Knutson excavated for the corner, John Tupa from Hutchinson with a backhoe. They dug a hole 5 feet by 10 feet by 4 feet deep but found no evidence of the government corner.

September 14, 1976. Knutson set a spike on the center line intersection of the roads and took available reference ties.

September 28, 1976. Knutson set a McLeod County cast iron monument at the corner.

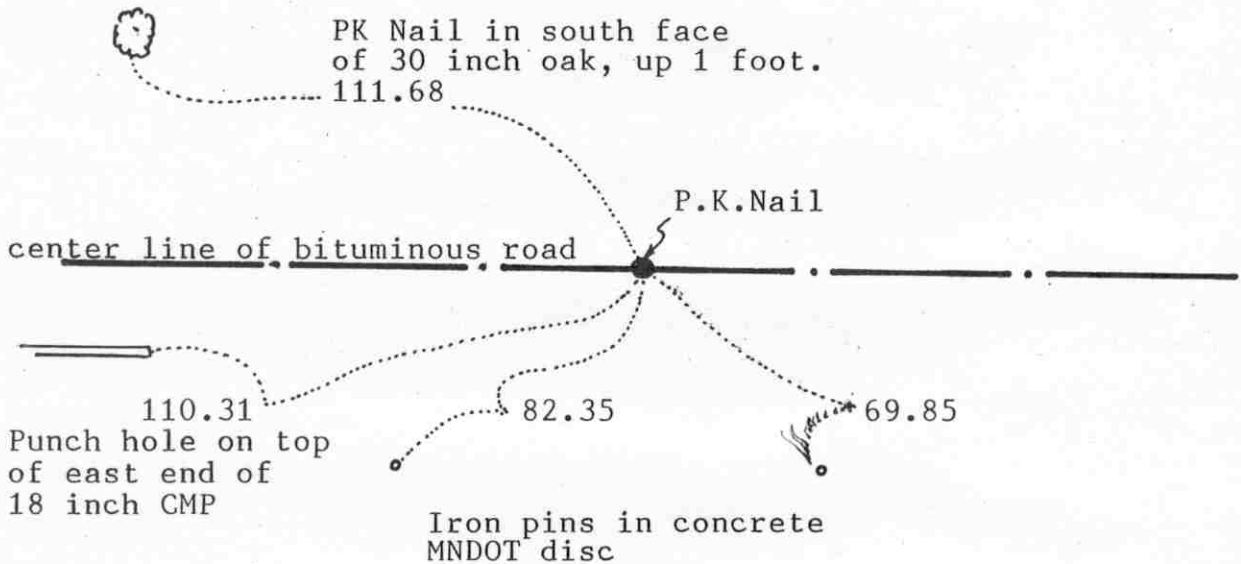
NORTHEAST corner, Section 32, Township 115 North, Range 29 West

Certificate of Location of Government Corner

SKETCH OF REFERENCE TIES
(NO SCALE)

SECTION 29

SECTION 28



SECTION 32

SECTION 33

Statement of evidence relative to this corner location on sheet 2

I hereby certify that this document was prepared by me or under my direct supervision.

Willard Pellinen

Willard Pellinen
McLeod County Surveyor
License No. 9626

Date July 26, 1994.

OFFICE OF THE COUNTY RECORDER
MCLEOD COUNTY, MINNESOTA.

I hereby certify that this document was filed in this office at 9 o'clock A. M. on the 16th day of August, 1994.

Armen O'Brien Mulder, County Recorder

By _____, Deputy

Document No. 261299

Certificate of Location of Government Corner

September, 1856. Denis L. Langton of the General Land Office set a post, raised a mound of earth, drove a charred stake and planted locust seeds at the corners of the mound.

June 10, 1975. Old corner had been destroyed by road construction. Dickman Knutson, county surveyor, reset the corner (a P.K. Nail) using ties stamped in State Highway Department ties. Disc set in concrete with an iron pin in center.

May 7, 1979. We found the PK Nail and took additional ties.

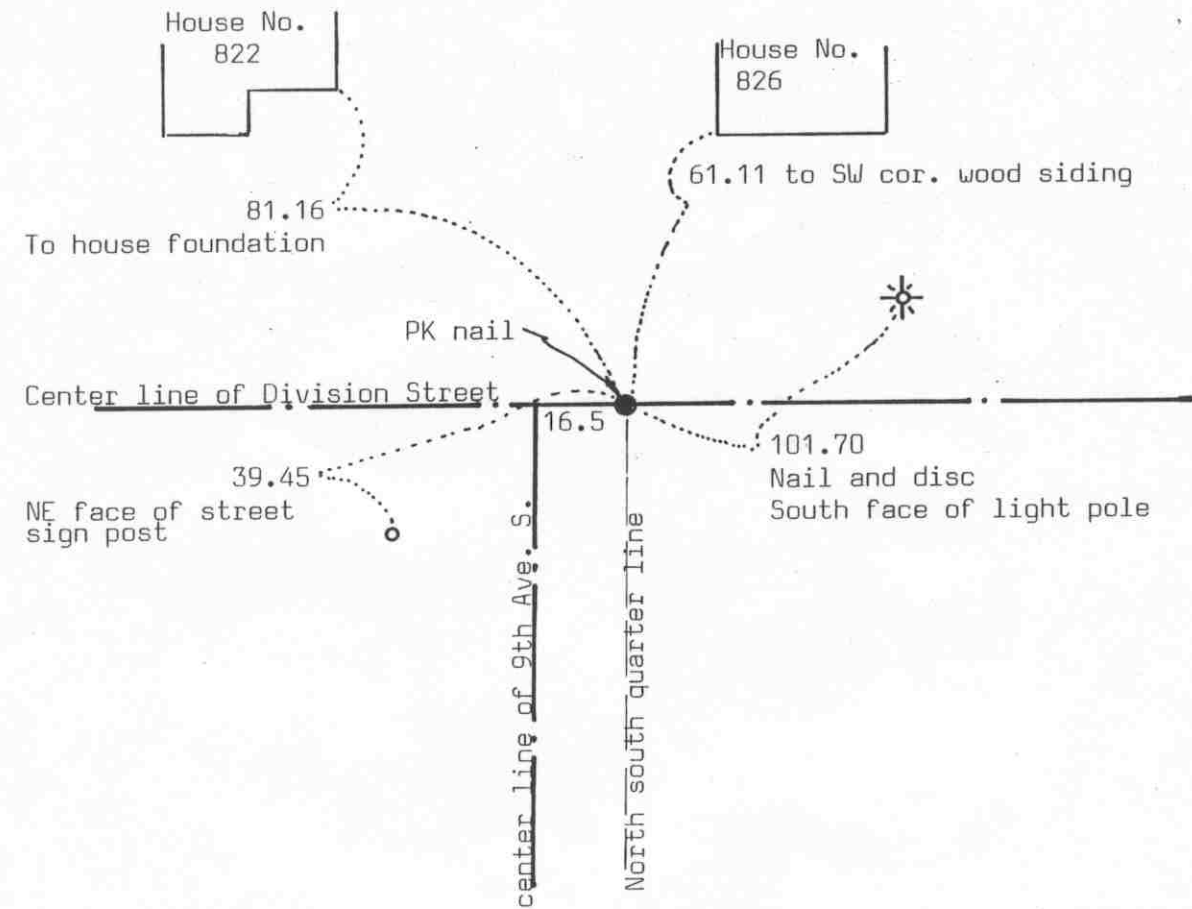
March 29, 1994. We found the PK nail and only two ties remaining. We took additional reference ties.

NORTH QUARTER corner, Section 32, Township 115 North, Range 29 West

Certificate of Location of Government Corner

SKETCH OF REFERENCE TIES (NO SCALE)

SECTION 29



SECTION 32

Statement of evidence relative to this corner location on sheet 2

I hereby certify that this document was prepared by me or under my direct supervision.

Willard Pellinen

Willard Pellinen
McLeod County Surveyor
License No. 9626

Date Oct. 17, 1992

OFFICE OF THE COUNTY RECORDER
MCLEOD COUNTY, MINNESOTA.

I hereby certify that this document was filed in this office at 3 o'clock P. M. on the 17th day of November, 1992.

Carmen Helie Mulder County Recorder

By _____, Deputy

Document No. 248898

Certificate of Location of Government Corner

September, 1856. Denis L. Langton of the General Land Office established this corner. He set a post, raised a mound of earth, drove a charcoal stake and planted locust seeds at the corners of the mound.

May 20, 1976. Dickman Knutson, county surveyor, reset this corner using found monumentation in the plats of the city of Brownton.

September 3, 1992. We reset a PK nail at the corner using information from our surveys in Brownton and took new reference ties.

The location of this corner has been perpetuated by the monumentation in the plats of Brownton.

NORTH QUARTER corner, Section 5, Township 114 North, Range 29 West

Certificate of Location of Government Corner

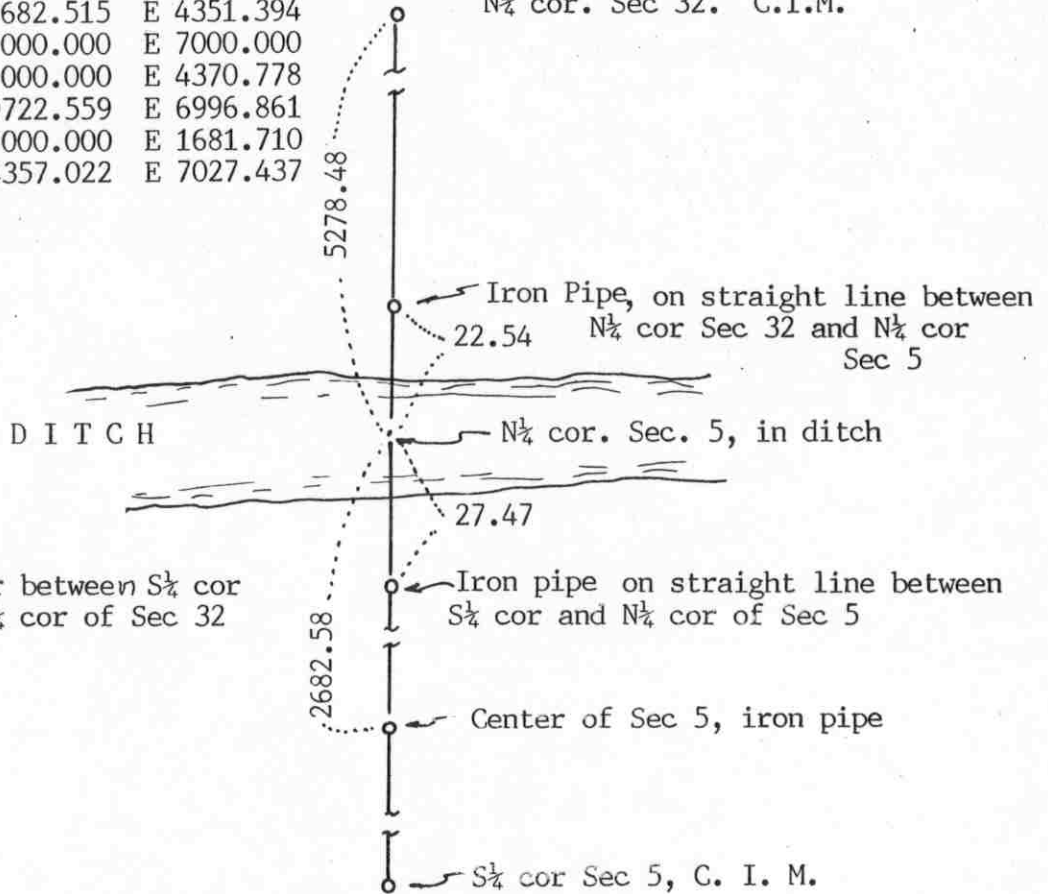
SKETCH OF REFERENCE TIES
(NO SCALE)

SECTION 32, T. 115 N., R. 29 W.

COORDINATES

N $\frac{1}{4}$ cor Sec 5.	N 9682.515	E 4351.394
E $\frac{1}{4}$ cor Sec 5.	N 7000.000	E 7000.000
Center Sec 5.	N 7000.000	E 4370.778
NE cor Sec 5.	N 9722.559	E 6996.861
W $\frac{1}{4}$ cor Sec 5.	N 7000.000	E 1681.710
SE cor Sec 5.	N 4357.022	E 7027.437

N $\frac{1}{4}$ cor. Sec 32. C.I.M.



Angle at N $\frac{1}{4}$ cor between S $\frac{1}{2}$ cor of Sec 5 and N $\frac{1}{4}$ cor of Sec 32 not known

SECTION 5, T. 114 N., R. 29 W.

Statement of evidence relative to this corner location on sheet 2

I hereby certify that this document was prepared by me or under my direct supervision.

Willard Pellinen
Willard Pellinen
McLeod County Surveyor
License No. 9626

Date July 18, 1994

OFFICE OF THE COUNTY RECORDER
MCLEOD COUNTY, MINNESOTA.

I hereby certify that this document was filed in this office at 9 o'clock A. M. on the 26th day of July, 1994.

CARMEN OSTLIE MULLER, MCLEOD COUNTY RECORDER, County Recorder

By Shyllis Sankowich, Deputy

Document No. 260922

Certificate of Location of Government Corner

1855. John Ryan of the General Land Office first established this corner. He set a post, deposited charcoal, dug pits and trench, built a mound and planted osage orange seeds at the corners of the mound.

1949. Fred Koenig, surveyor (not registered) found an iron monument at the corner.

1968. Dickman Knutson, county surveyor, replaced a found iron monument with a McLeod County cast iron monument and took reference ties.

August 9, 1982. We found the monument and established coordinates for the quarter corner and some other government corners in Section 5. The quarter corner would be destroyed by ditch construction.

February 11, 1986. We reestablished the location of the quarter corner which now fell in the middle of the new ditch. We set an iron pipe 27.47 feet south of the north quarter corner along the north-south quarter line of Section 5.

February 26, 1986. We set an iron pipe 22.54 feet north of the quarter corner along the north-south quarter line of Section 5.

March 25, 1994. We found the iron pipes 27.47 feet south and 22.54 feet north of the quarter corner which is in the middle of the east-west ditch.

NORTHEAST corner, Section 5, Township 114 North, Range 29 West

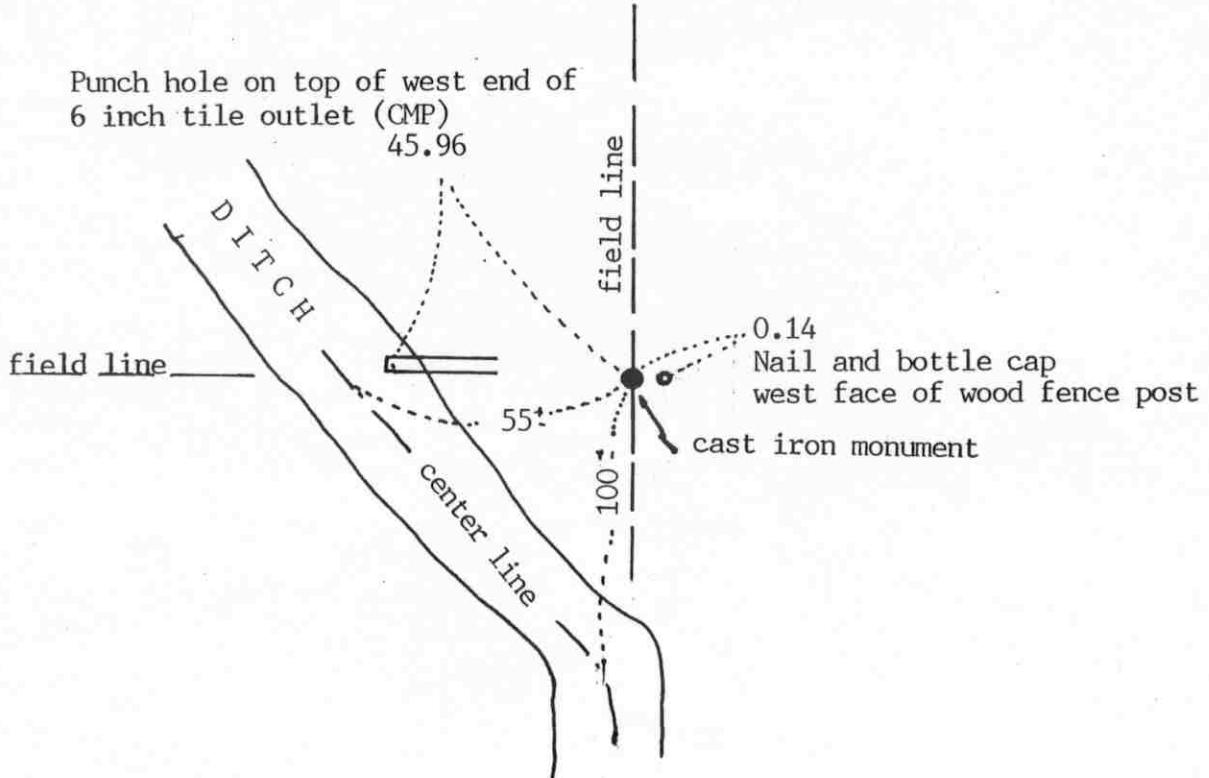
Certificate of Location of Government Corner

SKETCH OF REFERENCE TIES
(NO SCALE)

SECTION 32

SECTION 33

T. 115 R. 29



T. 114 R. 29

SECTION 5

SECTION 4

Statement of evidence relative to this corner location on sheet 2

I hereby certify that this document was prepared by me or under my direct supervision.

Willard Pellinen

Willard Pellinen
McLeod County Surveyor
License No. 9626

Date July 11, 1994

OFFICE OF THE COUNTY RECORDER
MCLEOD COUNTY, MINNESOTA.

I hereby certify that this document was filed in this office at 9 o'clock A. M. on the 26th day of July, 1994.

CARMEN OSTLIE MILDORF, MCLEOD COUNTY RECORDER, County Recorder

By Phyllis Sopkowiak, Deputy

Document No. 260921

Certificate of Location of Government Corner

1855. John Ryan of the General Land Office set a witness corner 2.40 chains (158.40 feet east of the section corner which fell in a marsh. He set a post, deposited charcoal, dug a pit 8 links east and built a mound.

November, 1970. Henry Krohn, 60 plus years old and had lived in the area for 35 years said adjoining property owners agree the section corner is in line with a fence to the west and 2 feet west of the fence running north. Dickman Knutson, county surveyor, set a McLeod County cast iron monument at this location and took available reference ties.

August 9, 1982. We found the monument and took additional ties. Corner might possibly be destroyed by new ditch construction.

March 25, 1994. We found the monument in good condition. Ditch construction was to the west and south of the corner. We checked the reference ties.

EAST QUARTER corner, Section 33, Township 115 North, Range 29 West

Certificate of Location of Government Corner

SKETCH OF REFERENCE TIES (NO SCALE)



SECTION 33

SECTION 34

P.K. Nail in west face
of power pole 29.00

Nail and bottle cap
South face of power pole
259.29

cast iron monument

center line of gravel road

center line of bituminous road

92.63
Nail and bottle cap
West face of 12 inch popple,
up 5 feet.

Statement of evidence relative to this corner location on sheet 2

I hereby certify that this document was prepared by me or under my direct supervision.

Willard Pellinen

Willard Pellinen
McLeod County Surveyor
License No. 9626

Date July 25, 1994

OFFICE OF THE COUNTY RECORDER
MCLEOD COUNTY, MINNESOTA.

I hereby certify that this document was filed in this office at 9 o'clock A.M. on the 16th day of August, 1994.

Armen Otis Mulder, County Recorder

By _____, Deputy

Document No. 261301

Certificate of Location of Government Corner

September, 1856. Denis L. Langton of the General Land Office established this corner. He set a post, raised a mound of earth, drove a charred stake and planted locust seeds at the corners of the mound.

August 26, 1976. Dickman Knutsto, county surveyor, dug for the corner, John Tupa from Hutchinson with a backhoe. They found 12 inch by 15 inch stone down $1\frac{1}{2}$ feet below the surface. They found a 1 inch diameter steel shaft beside the stone and a 3 inch diameter wood post beside the stone. They took available ties.

September 27, 1976. Knutson set a McLeod County cast iron monument at the corner.

March 3, 1994. We found the monument in good condition down 8 inches below the surface and took new ties.

The monument set by Knutson is accepted as marking the quarter corner. It fits long standing occupation lines, the center line P.I. of roads to the east and south and it perpetuates the location of an older monument.

Certificate of Location of Government Corner

This corner was established by the Government in 1856 and was monumented by a wood post in a mound of earth.

November, 1898, field notes by E.L.Higgins shows he found an oak post at this corner while doing a survey in Section 28.

State Highway Department road plans also show they found an oak post at this corner at center line P.I. station 483+88.0.

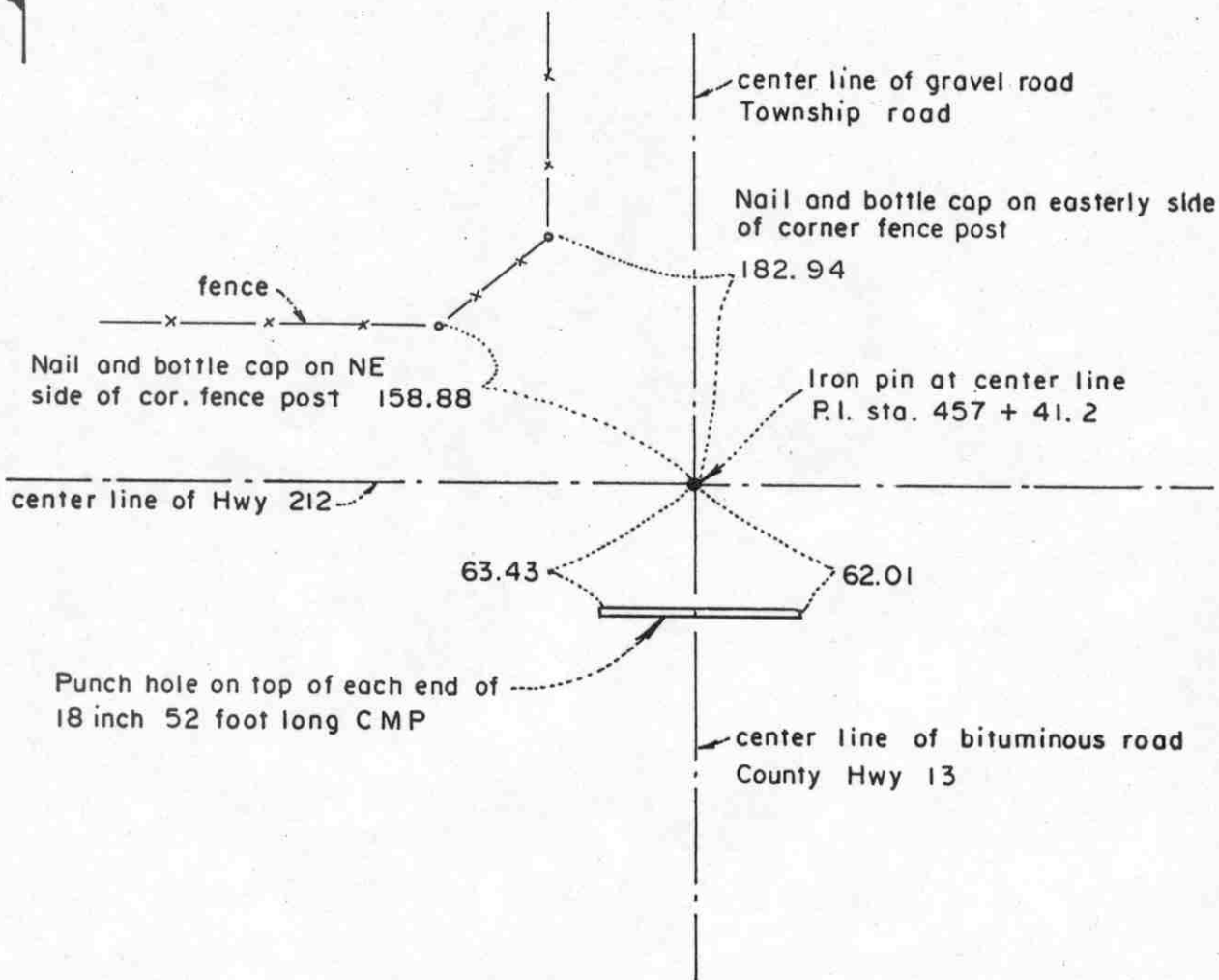
In August, 1986, we measured east from the north quarter corner of Section 33 a distance of 2646.80 feet, as shown on the highway plans, and set a railroad spike on the center line, and took reference ties.

Certificate of Location of Government Corner



SKETCH OF REFERENCE TIES

(NO SCALE)



Statement of evidence relative to this corner location on sheet 2

I hereby certify that this document was prepared by me or under my direct supervision.

Willard Pellinen
Willard Pellinen
McLeod County Surveyor
License No. 9626

Date February 8, 1987

OFFICE OF THE COUNTY RECORDER
MCLEOD COUNTY, MINNESOTA.

I hereby certify that this document was filed in this office at 8 o'clock A.M. on the 18th day of October, 1988.

Carmen Ostlie, County Recorder

By _____, Deputy

Document No. 225052

Certificate of Location of Government Corner

This corner was originally established by the Government in 1856 and was monumented by a wood post in a mound of earth.

In 1898, E.L.Higgins found a mound of earth and reestablished this corner while doing a survey in Section 28.

In 1914 Christlieb set an iron post at this corner at the center line intersection of roads running east-west and north-south.

In June, 1986, we tied off an iron pin set by the State Highway Department at center line P.I. station 457+41.2 of Highway No. 212, which is the quarter corner according to the Highway Department highway plans.

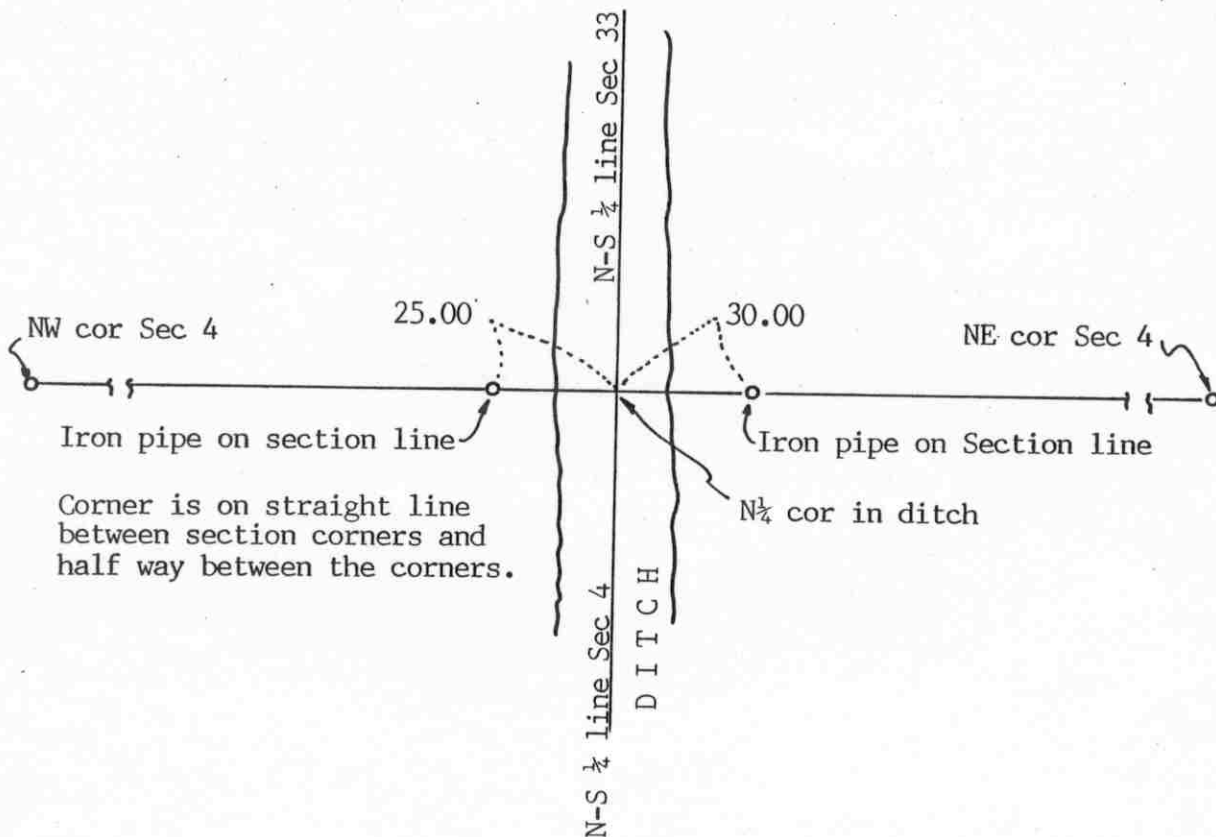
We feel this is the true corner as perpetuated by the Highway Department.

Certificate of Location of Government Corner

SKETCH OF REFERENCE TIES

(NO SCALE)

SECTION 33 T.115 R. 29



SECTION 4, T. 114, R. 29

Statement of evidence relative to this corner location on sheet 2

I hereby certify that this document was prepared by me or under my direct supervision.

Willard Pellinen

Willard Pellinen
McLeod County Surveyor
License No. 9626

Date July 18, 1994.

OFFICE OF THE COUNTY RECORDER
MCLEOD COUNTY, MINNESOTA.

I hereby certify that this document was filed in this office at 9 o'clock A. M. on the 26th day of July, 19 94.

GARMEN OSTLIE MILDRE, MCLEOD COUNTY RECORDER

, County Recorder

By Phyllis Sopotowick, Deputy

Document No. 260920

NORTH QUARTER corner, Section 4, Township 114 North, Range 29 West

Certificate of Location of Government Corner

1855. John Ryan of the General Land Office first established this corner. He set a post for a witness corner 250.8 feet west of the true corner and deposited charcoal and dug a pit 8 links west and built mound. Corner fell in a pond.

September, 1970. August Kohls, 60 + years old, in the area for 35 years and Victor Schrupp, 57 years old and 36 years in the area, both stated the quarter corner is in the north-south ditch.

November, 1970. Dickman Knutson, county surveyor, found a wood stake on the west bank of the ditch, on line and half way between the section corners. Stake was not original government corner. Original corner was not set. The stake had to be set after the ditch was built. No information found as to who set the stake. Knutson replaced the stake with a McLeod County cast iron monument and took available reference ties.

September 17, 1986. Ditch had been improved and the monument destroyed. We set an iron pipe 25.00 feet west and an iron pipe 30 feet east of the corner location. (along the section line)

March 25, 1994. We found the iron pipes in place.

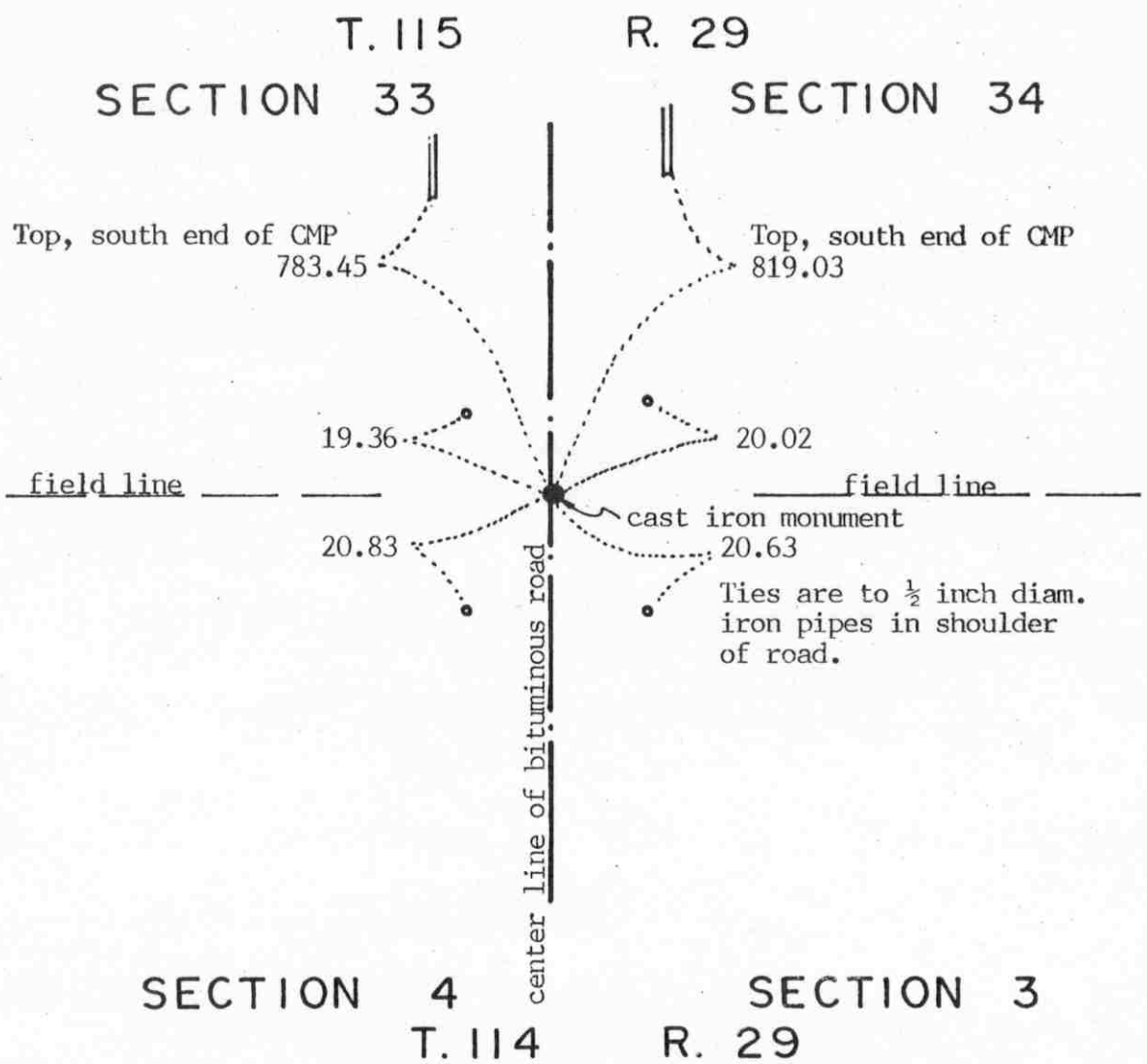
NORTHEAST corner, Section 4, Township 114 North, Range 29 West

Certificate of Location of Government Corner



SKETCH OF REFERENCE TIES

(NO SCALE)



Statement of evidence relative to this corner location on sheet 2

I hereby certify that this document was prepared by me or under my direct supervision.

Willard Pellinen
Willard Pellinen
McLeod County Surveyor
License No. 9626

Date July 25, 1994

OFFICE OF THE COUNTY RECORDER
MCLEOD COUNTY, MINNESOTA.

I hereby certify that this document was filed in this office at 9 o'clock A.M. on the 16th day of August, 1994.

Carmon Otis Mulder County Recorder

By _____, Deputy

Document No. 261289

Certificate of Location of Government Corner

1855. John Ryan of the General Land Office established this corner. He set a post, deposited charcoal, dug pits and trench, built a mound of earth and planted osage orange seeds at the corners of the mound.

1970. Dickman Knutson, county surveyor, dug for the corner at the center line of the north-south road in line with a fence to the east. Adjoining property owners say this is the section corner and that there is a stone there. John Tupa from Hutchinson dug with a backhoe. They found a stone down 3 feet and took available reference ties.

November 3, 1970. Knutson set a McLeod County cast iron monument at the corner.

March 3, 1994. We found the monument in good condition down 6 inches below the surface of the road and took new reference ties.

The monument set by Knutson is accepted as marking the section corner. It fits long standing occupation lines, the center line of the road and the fence to the east, and it perpetuates the location of an older monument, the stone.

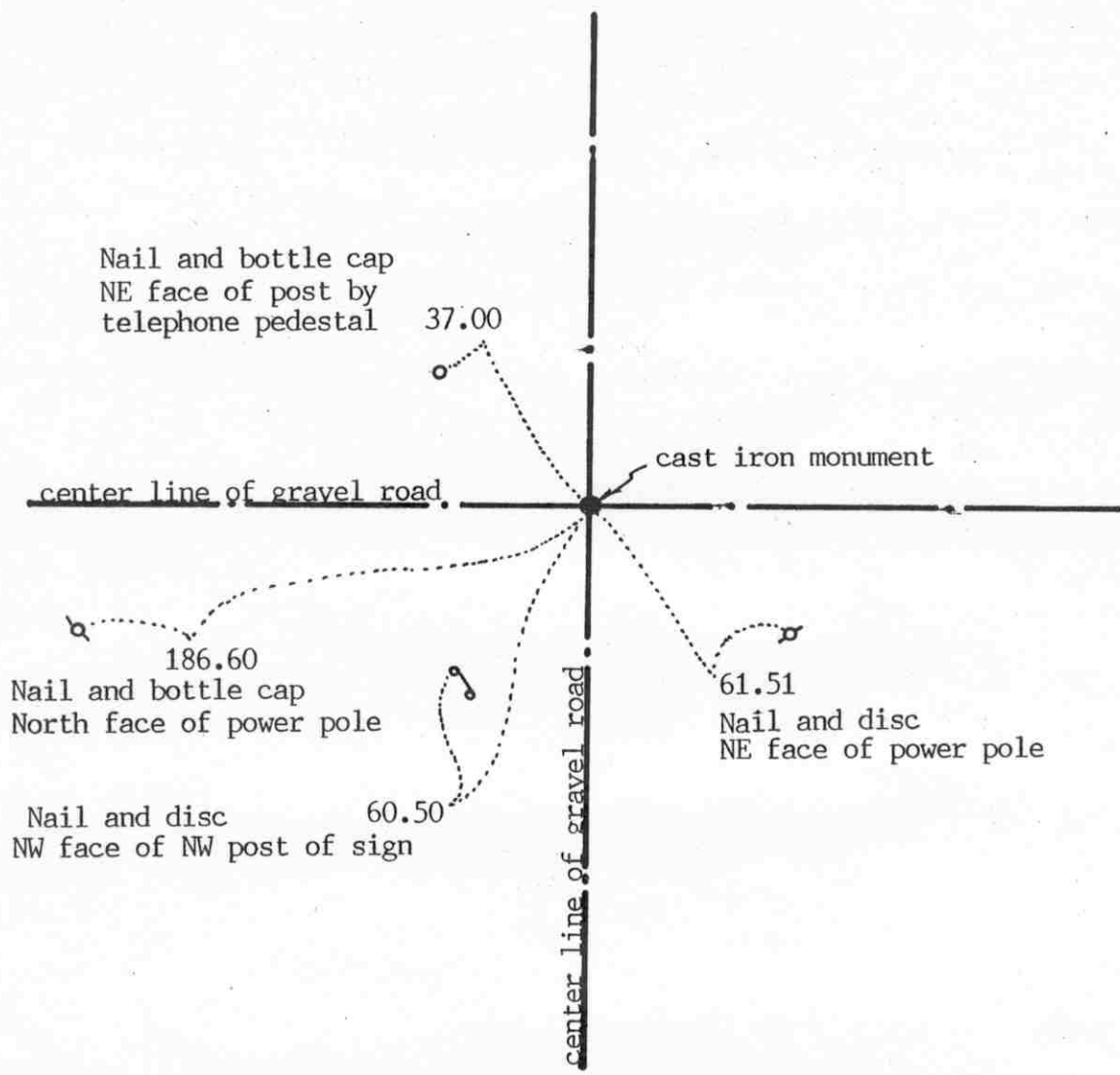
EAST QUARTER corner, Section 34, Township 115 North, Range 29 West

Certificate of Location of Government Corner

SKETCH OF REFERENCE TIES
(NO SCALE)

SECTION 34

SECTION 35



Statement of evidence relative to this corner location on sheet 2

I hereby certify that this document was prepared by me or under my direct supervision.

Willard Pellinen
Willard Pellinen
McLeod County Surveyor
License No. 9626

Date July 25, 1994

OFFICE OF THE COUNTY RECORDER
MCLEOD COUNTY, MINNESOTA.

I hereby certify that this document was filed in this office at 9 o'clock A.M. on the 16th day of August, 1994.

Armen Ottilie Mulder, County Recorder

By _____, Deputy

Document No. 261302

EAST QUARTER corner, Section 34, Township 115 North, Range 29 West

Certificate of Location of Government Corner

September, 1856. Denis L. Langton of the General Land Office set a post in a mound of earth, drove a charred stake and planted locust seeds at the corners of the mound.

March 30, 1976. Dickman Knutson, county surveyor, measured the east line of Section 34 and set a temporary quarter corner at the center line intersection of the roads.

August 26, 1976. Knutson dug for the corner, John Tupa from Hutchinson with a backhoe. They found a wood stake down 2 feet below the surface of the gravel road. They took ties and directly below the wood stake they found a 15 inch diameter stone with some rotted wood on the northeast side of the stone.

September 27, 1976. Knutson set a McLeod County cast iron monument and took additional reference ties.

March 29, 1994. We found the monument in good condition and took new reference ties.

The monument is accepted as marking the correct location of the quarter corner. It fits long standing occupation lines and it perpetuates the location of older monument. (the wood stake and the stone)

Certificate of Location of Government Corner

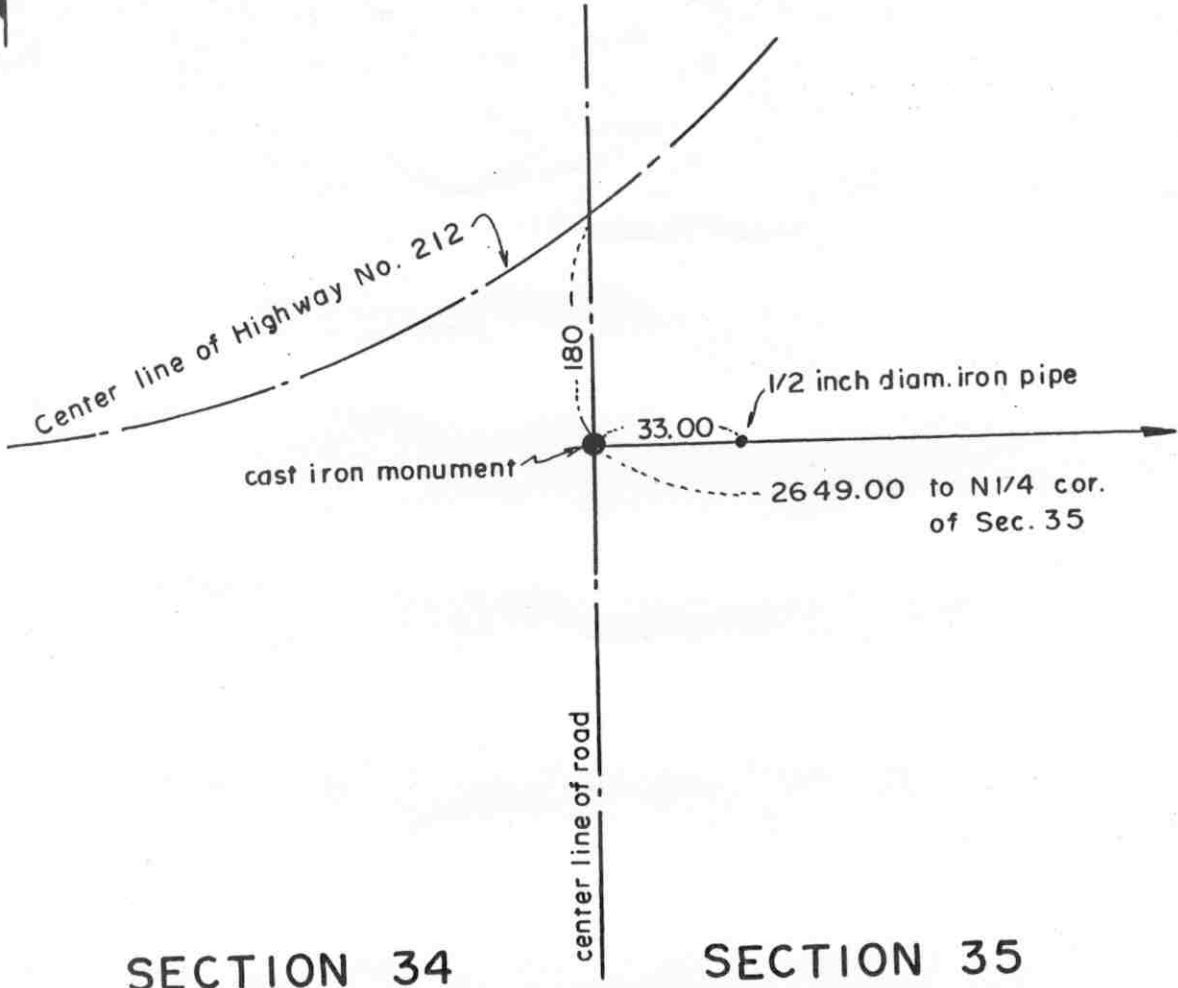
Northeast corner, Section 34, Township 115 North, Range 29 West

SKETCH OF REFERENCE TIES (NO SCALE)



SECTION 27

SECTION 26



SECTION 34

SECTION 35

Statement of evidence relative to this corner location on sheet 2

I hereby certify that this document was prepared by me or under my direct supervision.

Willard Pellinen
Willard Pellinen
McLeod County Surveyor
License No. 9626.

Date Sept. 19, 1994.

OFFICE OF THE COUNTY RECORDER
MCLEOD COUNTY, MINNESOTA

I hereby certify that this document was filed in this office at 9 o'clock A.M. on the 10th day of January, 19 95.

Carmen Estlie Mulder, County Recorder

By _____, Deputy.

Document No. 263628

Certificate of Location of Government Corner

Northeast Corner, Section 34, Township 115 North, Range 29 West

September, 1856. Denis L. Langton of the General Land Office originally established this corner. He set a post, raised a mound of earth, drove a charred stake and planted locust seeds at the corners of the mound.

August 26, 1976. Dickman Knutson, county surveyor, dug for the corner at the center line of the north-south road at the distance shown in the State Highway No. 212 right of way plans. Found a 15 inch diameter stone down 2 feet below the surface of the road, with a wood stake on the north side of the stone. This was close to P.O.S.T. 536 + 84 as shown on the plans.

September 28, 1976. Knutson set a McLeod County cast iron monument.

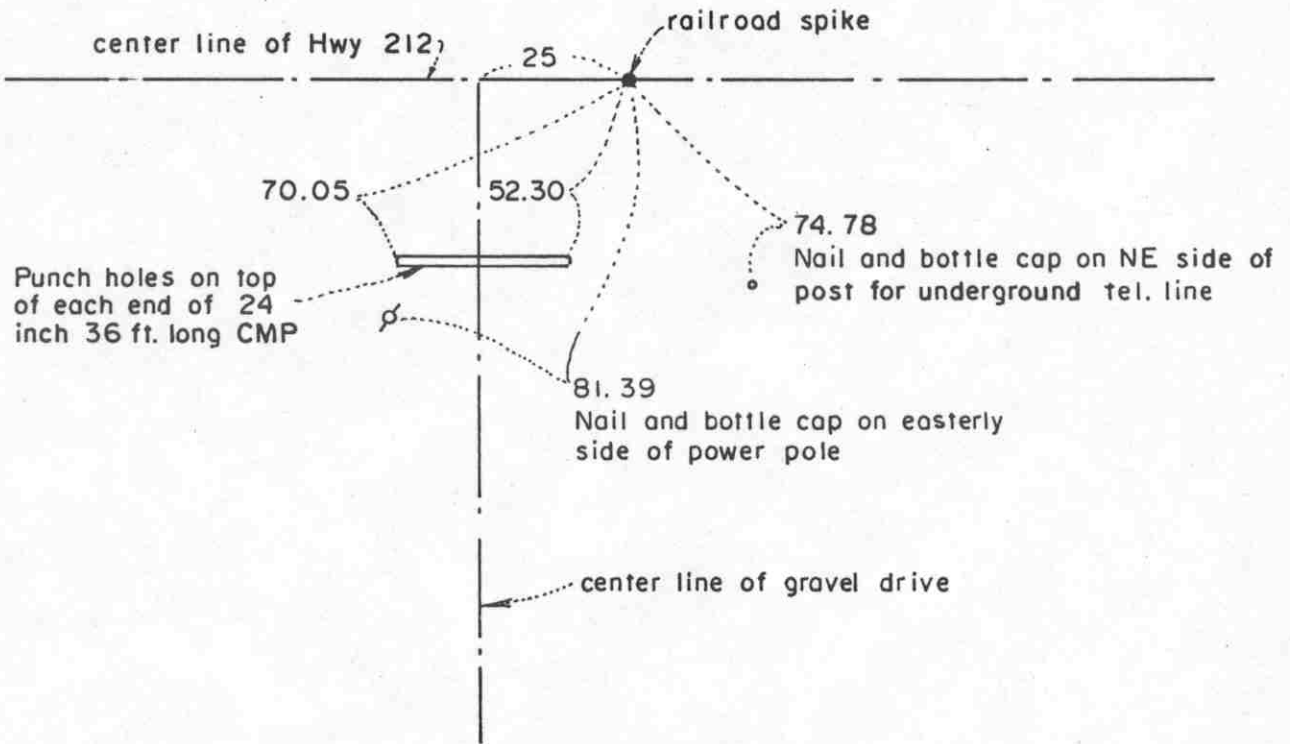
February 14, 1986. We found no ties remaining for the corner. We dug and found the monument in good condition down 0.3 foot below the surface and took new available reference ties.

February 14, 1993. We found the monument in good condition and checked the ties.

Certificate of Location of Government Corner



SKETCH OF REFERENCE TIES
(NO SCALE)



Statement of evidence relative to this corner location on sheet 2

I hereby certify that this document was prepared by me or under my direct supervision.

Willard Pellinen

Willard Pellinen
McLeod County Surveyor
License No. 9626

Date February 9, 1987

OFFICE OF THE COUNTY RECORDER
MCLEOD COUNTY, MINNESOTA.

I hereby certify that this document was filed in this office at 8 o'clock A.M. on the 18th day of October 1988.

Carmen Ostlie, County Recorder

By _____, Deputy

Document No. 225053

Certificate of Location of Government Corner

This corner was established by the Government in 1856 and was monumented by a wood post in a mound of earth.

We could find no re-survey information relative to the location of this corner.

The highway plans for Highway 212 show an assumed location for this corner, but they said there was no information in the old notes as to why they assumed the corner at this location.

We talked with Mr. Donald Husske, who has owned 20 acres in the Northwest Quarter for 10 years. Mr. Husske said he was told when he bought the property that the north-south quarter line of Section 34 was east of his driveway.

In September, 1986, we measured the north line of Section 34 and set a temporary quarter corner on the center line of No. 212 and half way between section corners, and took reference ties. This is about 70 feet east of the Highway assumed corner.

Using our temporary corner, we ran the north-south quarter line of Section 34 and found a brush and fence line near the center of the section within a foot of our line. Our line also falls east of Mr. Husske's driveway.

We also ran the north-south quarter line of Section 27 and found a fence intersection (fences E-W-S) south the railroad, a few hundred feet south of the center of the section, within 3 feet feet of our line.

We feel the center line of Highway No. 212 has perpetuated the north-south location of the quarter corner and that the east-west location is lost. We accepted our temporary corner as the true location of the quarter corner.

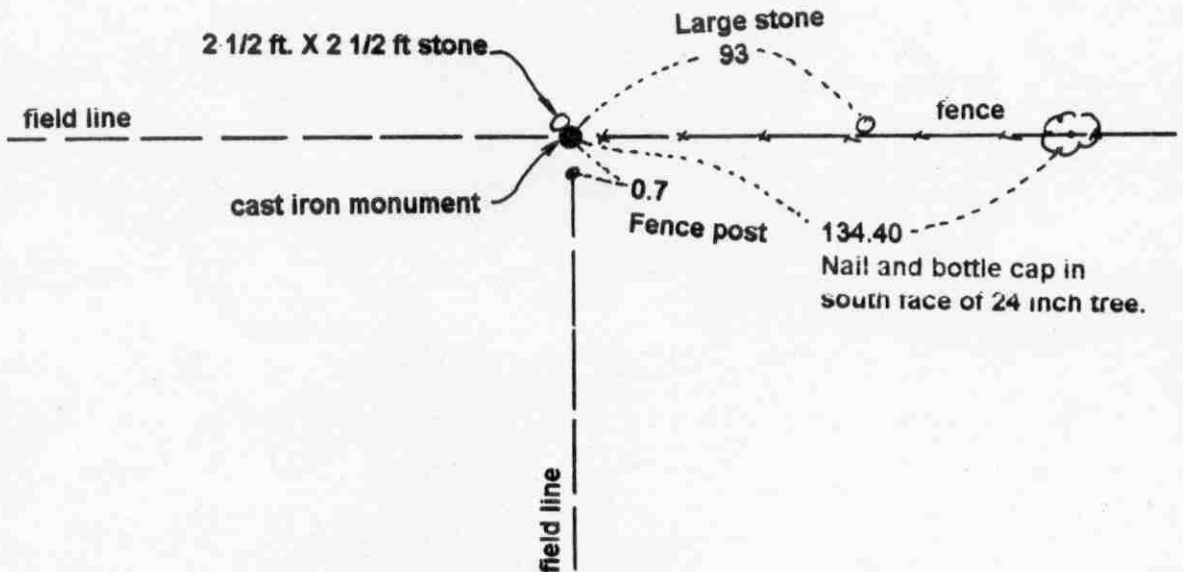
Certificate of Location of Government Corner

North Quarter corner, Section 3, Township 114 North, Range 29 West

SKETCH OF REFERENCE TIES (NO SCALE)



SECTION 34 T. 115 R. 29



SECTION 3, T. 114 R. 29

Statement of evidence relative to this corner location on sheet 2

I hereby certify that this document was prepared by me or under my direct supervision.

Willard Pellinen
Willard Pellinen
McLeod County Surveyor
License No. 9626.

Date Sept. 7, 1995

OFFICE OF THE COUNTY RECORDER MCLEOD COUNTY, MINNESOTA

I hereby certify that this document was filed in this office at 9 o'clock A. M. on the 14th day of September 19 95.

Carmen Estlin Gulder, County Recorder

By _____, Deputy.

Document No. 268016

Certificate of Location of Government Corner

North Quarter Corner, Section 3, Township 114 North, Range 29 West

1855. John Ryan of the General Land Office established this corner. He set a post, deposited charcoal, dug pits and trench, built mound and planted osage orange seeds at the corners of the mound.

1970. Dickman Knutson, county surveyor, found a 2 foot by 2 1/2 foot stone at the intersection of field lines east, west and south. Knutson moved the stone, set a McLeod County cast iron monument and took available reference ties. Adjoining property owners have accepted this location as marking the quarter corner.

April 10, 1995. We found the monument in good condition and took new reference ties.

NORTHEAST corner, Section 3, Township 114 North, Range 29 West

Certificate of Location of Government Corner

SKETCH OF REFERENCE TIES
(NO SCALE)



SECTION 34
T. 115 R. 29

SECTION 35
T. 115 R. 29

NE corner of steel beam
50.88

Steel post
Sign post
56.60

NE corner of steel beam
58.53

cast iron monument

center line of road

SECTION 3
T. 114 R. 29

SECTION 2
T. 114 R. 29

Statement of evidence relative to this corner location on sheet 2

I hereby certify that this document was prepared by me or under my direct supervision.

Willard Pellinen
Willard Pellinen
McLeod County Surveyor
License No. 9626

Date June 29, 1994.

OFFICE OF THE COUNTY RECORDER
MCLEOD COUNTY, MINNESOTA.

I hereby certify that this document was filed in this office at 9 o'clock A. M. on the 26th day of July, 19 94.

CARMEN OSTLIE MULD-R, MCLEOD COUNTY RECORDER, County Recorder
By Dyllis Sophowick, Deputy
Document No. 260919

Certificate of Location of Government Corner

1855. John Ryan of the General Land Office established this corner. He set a post, deposited charcoal, dug pits and trench, built mound and planted osage orange seeds at the corners of the mound.

October 3, 1970. Dickman Knutson, county surveyor, dug for the corner, John Tupa from Hutchinson with a backhoe.

They found a large rock with a sharp point up.

October 13, 1970. Knutson replaced the rock with a McLeod County cast iron monument and took available reference ties.

March 3, 1994. We found the monument in good condition and checked the ties.

Certificate of Location of Government Corner



SKETCH OF REFERENCE TIES
(NO SCALE)

SECTION 35

SECTION 36

Nail and bottle cap
N'ly face of power pole

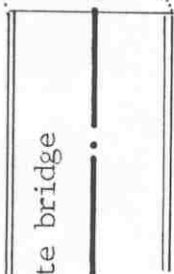
35.64

center line of
gravel road

1/2 inch diam. iron pipe

71.00

71.35



concrete bridge

Ties are to top outside corners of conc. railing (3 ft high) on east and west side of bridge deck

Statement of evidence relative to this corner location on sheet 2

I hereby certify that this document was prepared by me or under my direct supervision.

Willard Pellinen
Willard Pellinen
McLeod County Surveyor
License No. 9626

Date August 23, 1991

OFFICE OF THE COUNTY RECORDER
MCLEOD COUNTY, MINNESOTA.

I hereby certify that this document was filed in this office at 9 o'clock A.M. on the 27th day of August, 1991.

Carmen Ostlie, County Recorder

By _____, Deputy

Document No. 240560

Certificate of Location of Government Corner

September, 1856. Denis L. Langton of the General Land Office set a post in mound and dug pit 10 links south.

April 5, 1976. We dug for the corner and found a $\frac{1}{2}$ inch diameter iron rod of the center line of the road, on the westerly extension of the center line of the road to the east and on the easterly extension of the center line of the road to the west. This corner is 3.14 feet south of a split and 3.0 feet east of a straight line between the section corners. Also a fence running east ($\frac{1}{4}$ mile to the south) is half way between this corner and the south east corner of the section.

September 28, 1976. We set a McLeod County cast iron monument in place of the found iron rod and took available reference ties.

June 13, 1990. The corner has been destroyed by construction of a new bridge. We reset the corner using 1 remaining tie and our measurements along the east line of the section and took new reference ties.

We accept the found iron rod as having perpetuated the location of the quarter corner.

NORTHEAST corner, Section 35, Township 115 North, Range 29 West

Certificate of Location of Government Corner

SKETCH OF REFERENCE TIES
(NO SCALE)



SECTION 26

SECTION 25

cast iron monument

Nail and bottle cap
West face of power pole
273.41

Nail and bottle cap
South face of power pole
29.79

fence

Nail and bottle cap
West face of power pole
232.30

SECTION 35

SECTION 36

center line of gravel road

Statement of evidence relative to this corner location on sheet 2

I hereby certify that this document was prepared by me or under my direct supervision.

Willard Pellinen

Willard Pellinen
McLeod County Surveyor
License No. 9626

Date June 9, 1991

OFFICE OF THE COUNTY RECORDER
MCLEOD COUNTY, MINNESOTA.

I hereby certify that this document was filed in this office at 9 o'clock A. M. on the 20th day of June, 1991.

Carmen Ostlie, County Recorder

By Thyllis Jankowski, Deputy

Document No. 239530

NORTHEAST corner, Section 35, Township 115 North, Range 29 West

Certificate of Location of Government Corner

September, 1856. D.L.Langton of the General Land Office set a post, raised mound of earth, drove charred stake and planted locust seeds at the corners of the mound.

April 5, 1976. McCombs Knutson Associates measured the east line of Sections 26 and 35 and set a temporary northeast corner of Section 35 on the center line of the gravel road in line with a brush line to the east.

August 26, 1976. Knutson dug for the corner, John Tupa from Hutchinson with a backhoe. Down 3 feet below the surface they foun a stone, on the westerly extension of a fence to the east. They took reference ties.

January 27, 1977. Knutson set a spike at the corner and took additional reference ties.

April 7, 1978. Knutson replaced the spike with a McLeod County cast iron monument.

May 21, 1990. We found the monument in good condition and checked the reference ties.

We accept the stone found by Knutson as having perpetuated the correct location of the section corner. It fits the occupation lines, the center of the road and the fence to the east.

NORTH QUARTER corner, Section 35, Township 115 North, Range 29 West



Certificate of Location of Government Corner

SKETCH OF REFERENCE TIES

(NO SCALE)

SECTION 26

field line

field line

5297.30 to S $\frac{1}{4}$ cor Sec 35

2648.99 to NW cor Sec 35



cast iron monument

2642.60 to NE cor Sec 35

SECTION 35

Statement of evidence relative to this corner location on sheet 2

I hereby certify that this document was prepared by me or under my direct supervision.

Willard Pellinen

Willard Pellinen
McLeod County Surveyor
License No. 9626

Date July 19, 1994

OFFICE OF THE COUNTY RECORDER
MCLEOD COUNTY, MINNESOTA.

I hereby certify that this document was filed in this office at 9 o'clock A.M. on the 16th day of August, 1994.

Carmen Estelle Mulder

County Recorder

By _____, Deputy

Document No. 261303

NORTH QUARTER corner, Section 35, Township 115 North, Range 29 West

Certificate of Location of Government Corner

September, 1856. Denis L. Langton of the General Land Office established this corner. He set a post, raised mound of earth, drove charred stake and planted locust seeds at the corners of the mound.

February 10, 1977. Dickman Knutson, county surveyor, measured the north line of Section 35 and found a $1\frac{1}{2}$ inch diameter iron pipe along a north south field line. This was within $3\frac{1}{2}$ feet of being on a split between the section corners and within 4 feet of being on line between the section corners. Adjoining land owners have accepted this iron pipe as being the quarter corner.

April 26, 1979. We replaced the iron pipe with a McLeod County cast iron monument.

April 1, 1994. We found the monument in good condition.

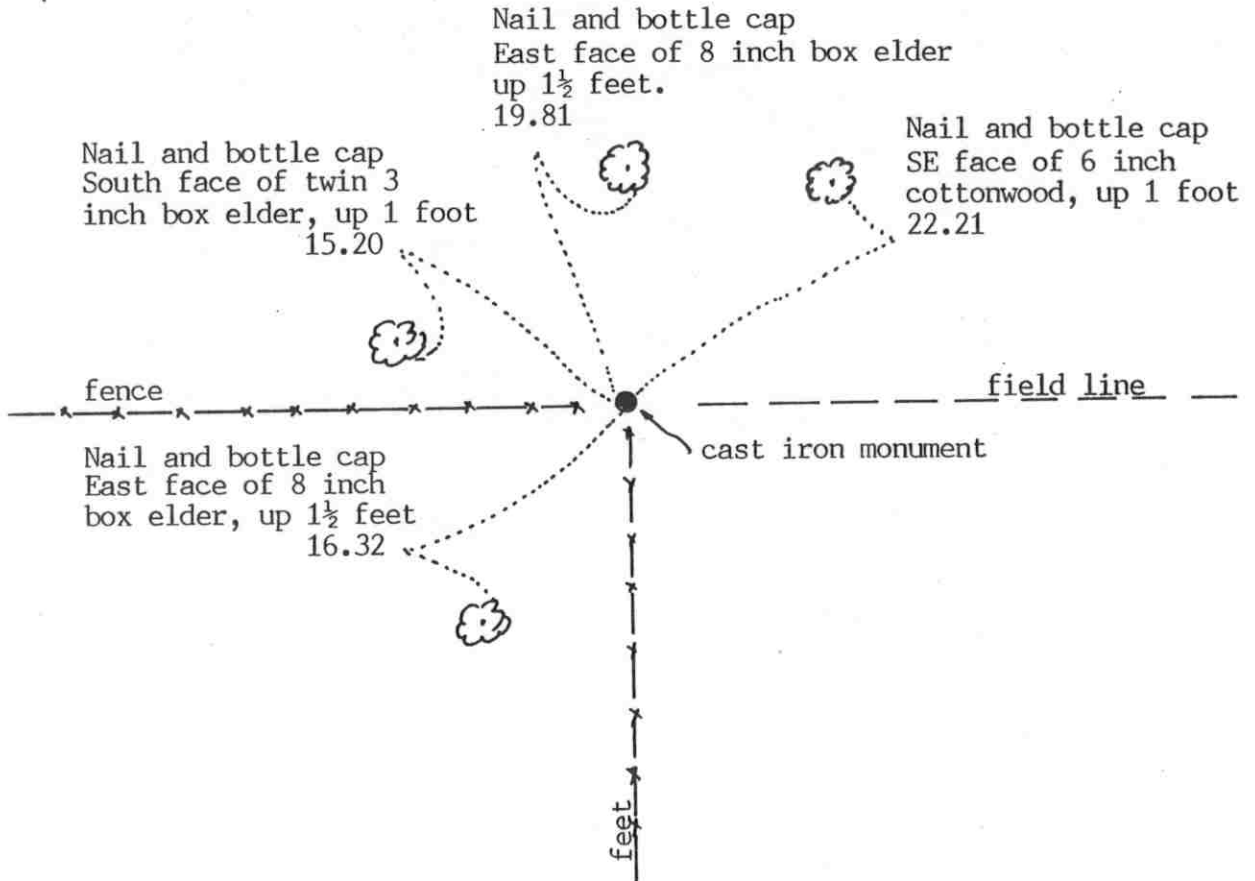
This monument is accepted as marking the correct location of the quarter corner. It fits long standing occupation lines, the field lines, and is within a few feet of the lost position for the corner.

Certificate of Location of Government Corner

North Quarter corner, Section 2, Township 114 North, Range 29 West

SKETCH OF REFERENCE TIES (NO SCALE)

SECTION 35 T. 115 R. 29



SECTION 2 T. 114 R. 29

Statement of evidence relative to this corner location on sheet 2

I hereby certify that this document was prepared by me or under my direct supervision.

Willard Pellinen
 Willard Pellinen
 McLeod County Surveyor
 License No. 9626.

Date Aug 3, 1994

**OFFICE OF THE COUNTY RECORDER
 MCLEOD COUNTY, MINNESOTA**

I hereby certify that this document was filed in this office at 9 o'clock A.M. on the 19th day of August 1994.

Carmen Estelle Mulder, County Recorder

By _____, Deputy.

Document No. 261385

Certificate of Location of Government Corner

NORTH QUARTER corner, Section 2, Township 114 North, Range 29 West

1855. John Ryan of the General Land Office set a post, deposited charcoal, dug pits and trench, built mound and planted osage orange seeds at the corners of the mound.

September 22, 1970. Dickman Knutson, county surveyor, measured the north line of Section 2 and set a temporary quarter at a fence intersection, fences east-west and south. Adjoining property owners agree this is the quarter corner.

November 4, 1970. Knutson set a McLeod County cast iron monument at the corner.

This corner falls 5.95 feet west and 4.07 feet south of a lost corner position.

April 5, 1994. We found the monument in good condition but no old reference ties remaining. We took new available ties.

The monument set by Knutson is accepted as marking the correct location of the quarter corner. It fits long standing occupation lines and is very close to being at the lost position for the corner.

NORTHEAST corner, Section 2, Township 114 North, Range 29 West

Certificate of Location of Government Corner

SKETCH OF REFERENCE TIES
(NO SCALE)



SECTION 35
T 115, R 29

SECTION 36
T 115, R 29

Nail and bottle cap
West face of power
pole. 157.18

cast iron monument

field line

fence

40.00

Nail and bottle cap
East face of power
pole. 192.18

Iron pipe on south line of
Section 36

center line of gravel road

SECTION 2
T 114, R 29

SECTION 1
T 114, R 29

Statement of evidence relative to this corner location on sheet 2

I hereby certify that this document was prepared by me or under my direct supervision.

Willard Pellinen

Willard Pellinen
McLeod County Surveyor
License No. 9626

Date August 22, 1991

OFFICE OF THE COUNTY RECORDER
MCLEOD COUNTY, MINNESOTA.

I hereby certify that this document was filed in this office at 9 o'clock A.M. on the 27th day of August, 1991.

Carmen Ostlie, County Recorder

By _____, Deputy

Document No. 240559

NORTHEAST _____ corner, Section 2, Township 114 North, Range 29 West

Certificate of Location of Government Corner

July, 1855. John Ryan of the General Land Office set a post at the corner, deposited charcoal, dug pits and trench, built mound and planted osage orange seeds at the corners of the mound.

October 20, 1970. McCombs Knutson Associated (Dickman Knutson, county surveyor) dug for the corner. They found an iron pipe at the center line of the north-south road in line with a fence to the east. Knutson set a McLeod County cast iron monument and took available ties.

November 16, 1979. We found the top of the cast iron monument had been broken off. We found the bottom of the monument down 16 inches below the surface and set a new monument over it and took new reference ties.

July 6, 1982. We found the monument in good condition and the reference ties ok.

June 13, 1990. We found the monument in good condition down 5 inches below the surface. Old ties all destroyed so we took new available reference ties.

We accept the iron pipe found by Knutson and later the cast iron monument as having perpetuated the correct location of the section corner.

Certificate of Location of Government Corner

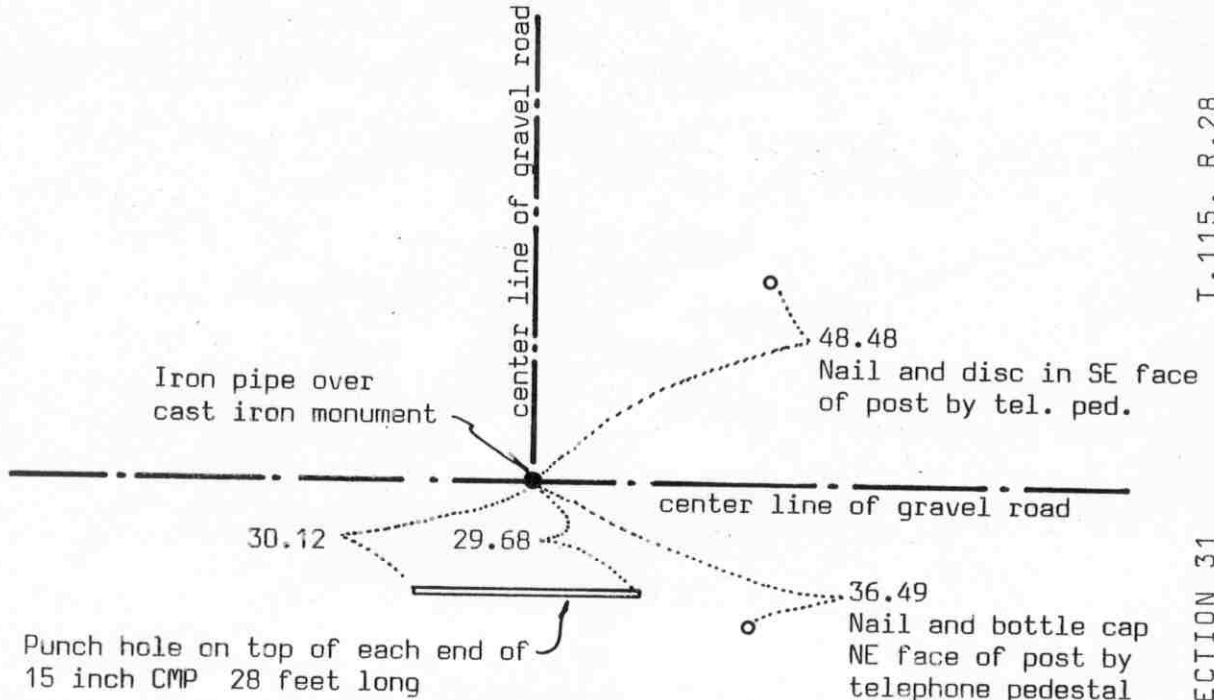
SKETCH OF REFERENCE TIES (NO SCALE)



SECTION 36, T.115, R.29

T.115, R.28

SECTION 31



Statement of evidence relative to this corner location on sheet 2

I hereby certify that this document was prepared by me or under my direct supervision.

Willard Pellinen

Willard Pellinen
McLeod County Surveyor
License No. 9626

Date July 16, 1990

OFFICE OF THE COUNTY RECORDER MCLEOD COUNTY, MINNESOTA.

I hereby certify that this document was filed in this office at 2 o'clock P.M. on the 23rd day of July, 1990.

Carmen Ostlie, County Recorder

By _____, Deputy

Document No. 234557

EAST QUARTER corner, Section 36, Township 115 North, Range 29 West

Certificate of Location of Government Corner

July, 1855. This corner was set by John Ryan of the General Land Office. He set a post, deposited charcoal, dug pits and trench, built mound and planted osage orange seeds at the corners of the mound.

October 3, 1970. McCombs Knutson Associates (Dickman Knutson, county surveyor) dug for the corner, John Tupa from Hutchinson with a backhoe. They dug a hole 12 feet by 8 feet by 5 feet deep but found nothing.

October 13, 1970. Knutson set a McLeod County cast iron monument at the center line intersection of the roads. Adjoining land owners all have accepted the center lines as marking the section and quarter section lines.

April 15, 1976. Knutson checked the east-west quarter line of Section 36 and found that the road runs along the quarter near the center of the section.

June 7, 1989. We found the monument in good condition down 18 inches below the road surface. We set a $\frac{1}{2}$ inch diameter iron pipe over the monument and took new reference ties.

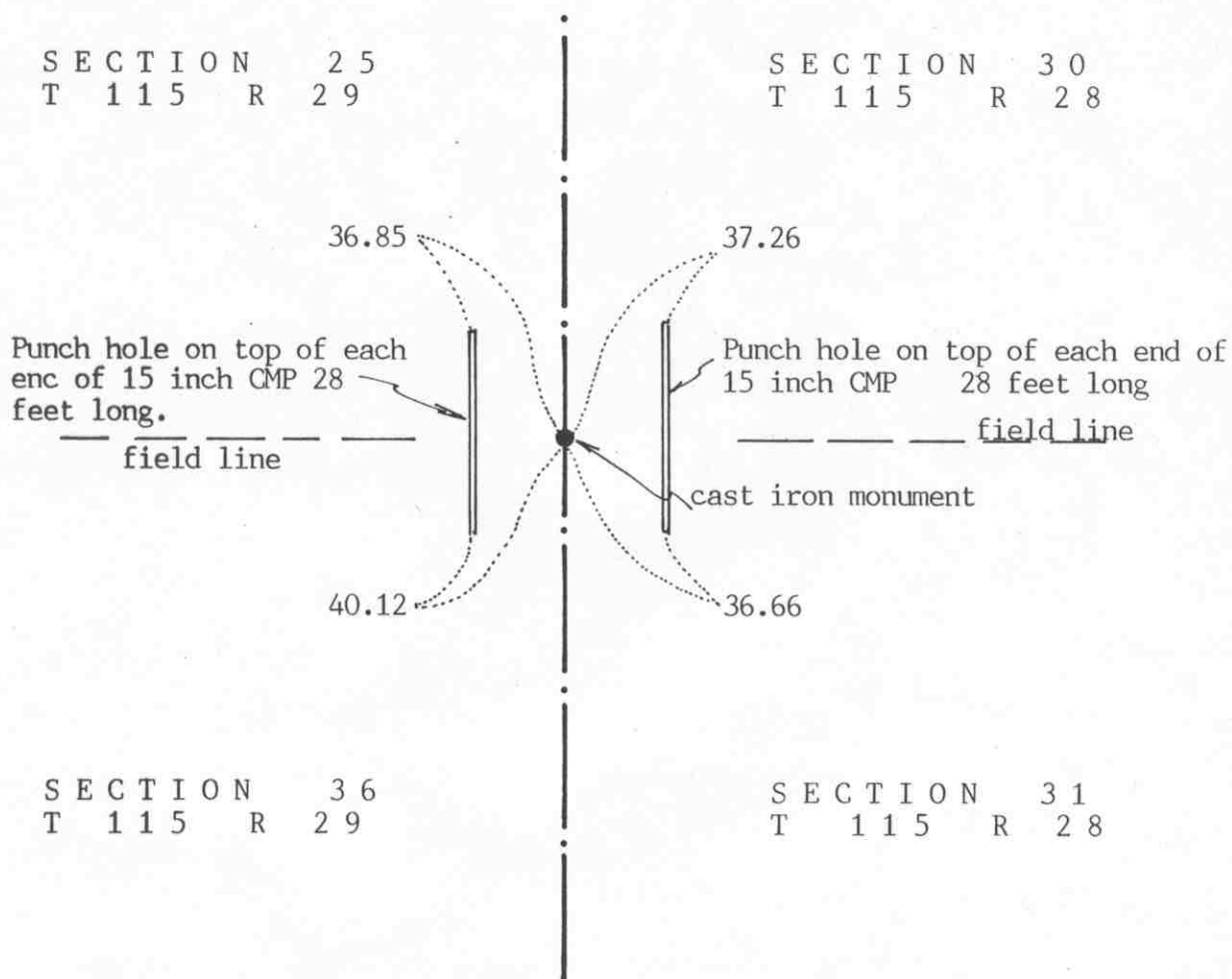
We feel the center lines of the roads have perpetuated the correct location of the quarter corner.

Certificate of Location of Government Corner



SKETCH OF REFERENCE TIES

(NO SCALE)



Statement of evidence relative to this corner location on sheet 2

I hereby certify that this document was prepared by me or under my direct supervision.

Willard Pellinen
Willard Pellinen
McLeod County Surveyor
License No. 9626

Date August 23, 1991

OFFICE OF THE COUNTY RECORDER
MCLEOD COUNTY, MINNESOTA.

I hereby certify that this document was filed in this office at 9 o'clock A.M. on the 27th day of August, 1991.

Carmen Ostlie, County Recorder

By _____, Deputy

Document No. 240561

NORTHEAST corner, Section 36, Township 115 North, Range 29 West

Certificate of Location of Government Corner

July, 1855. John Ryan of the General Land Office set a post, deposited charcoal, dug pits and trench, built mound and planted osage orange seeds at the corners of the mound.

October 3, 1970. McCombs Knutson Associates (Dickman Knutson, county surveyor) dug for the corner, John Tupa from Hutchinson with a backhoe. Down $3\frac{1}{2}$ feet below the surface of the gravel road, they found a very rotted wood stake. They took available reference ties. This stake was in the center of the north south gravel road in line with field lines to the east and west.

October 13, 1970. Knutson set a McLeod County cast iron monument and took additional ties.

June 13, 1990. We found the monument in good condition down 8 inches below the surface of the gravel road. All the old reference ties were destroyed so we took new available ties.

We accept the stake found by Knutson as having perpetuated the correct location of the section corner. It fits long standing occupation lines, the center line of the road and the field lines to the east and west.

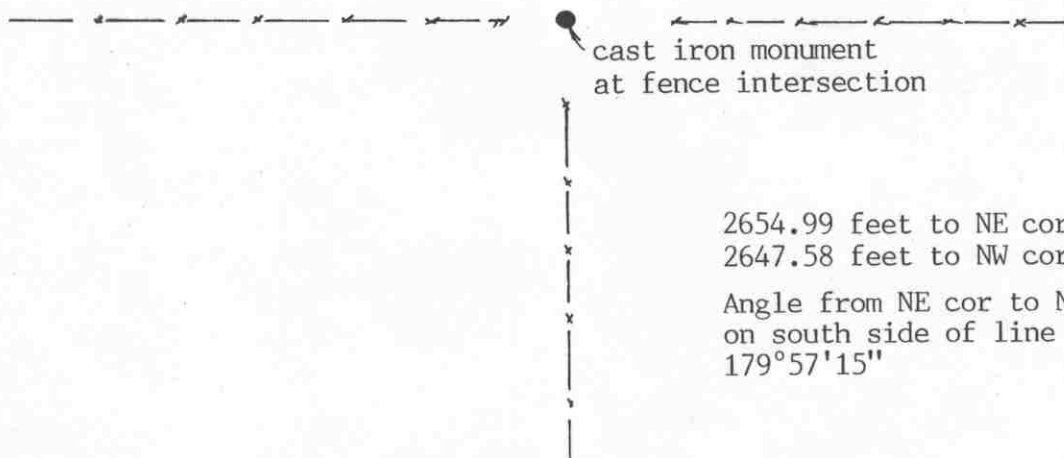
Certificate of Location of Government Corner



SKETCH OF REFERENCE TIES

(NO SCALE)

SECTION 25



cast iron monument
at fence intersection

2654.99 feet to NE cor of Sec.
2647.58 feet to NW cor of Sec.
Angle from NE cor to NW cor
on south side of line is
179°57'15"

SECTION 36

Statement of evidence relative to this corner location on sheet 2

I hereby certify that this document was prepared by me or under my direct supervision.

Willard Pellinen
Willard Pellinen
McLeod County Surveyor
License No. 9626

Date August 23, 1991

OFFICE OF THE COUNTY RECORDER
MCLEOD COUNTY, MINNESOTA.

I hereby certify that this document was filed in this office at 9 o'clock A.M. on the 26th day of Aug, 1991.

Sarmen Ostlie, County Recorder

By _____, Deputy

Document No. 240532

NORTH QUARTER corner, Section 36, Township 115 North, Range 29 West

Certificate of Location of Government Corner

September, 1856. Denis L. Langton of the General Land Office set a post, raised mound of earth, drove charred stake and planted locust seeds at the corners of the mound.

May 7, 1979. James Schwarze, 53 years old, has lived in the South Half of Section 25 for 30 years, says fence intersection is the quarter corner. Has been accepted by the adjoining land owners. We searched the area, and found a stake and stone down 1 foot below the surface at the fence intersection. We replaced the stone with a McLeod County cast iron monument and took available reference ties.

This corner is within 4 feet of being on a split between the section corners and is 1.05 feet north of a straight line.

June 7, 1990. We found the monument in good condition but all the reference ties gone. No available ties. We measured east and west to the section corners and turned the angle at the quarter corner.

We accept the stone we found as having perpetuated the correct location of the quarter corner.

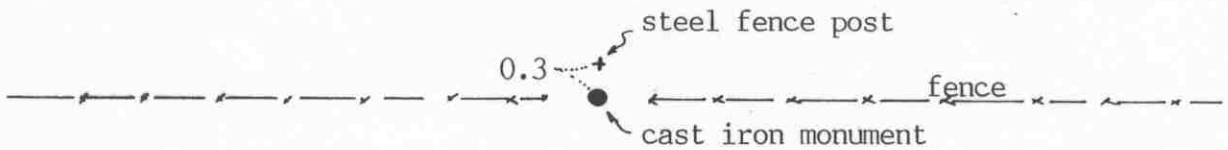
NORTH QUARTER corner, Section 1, Township 114 North, Range 29 West

Certificate of Location of Government Corner



SKETCH OF REFERENCE TIES
(NO SCALE)

SECTION 36 T. 115 R. 29



2644.97 feet to the NW corner of Section 1
2648.41 feet to the NE corner of Section 1

Angle from the NW cor to the NE cor on the north side of the line is 180°07'13"

SECTION 1 T. 114 R. 29

Statement of evidence relative to this corner location on sheet 2

I hereby certify that this document was prepared by me or under my direct supervision.

Willard Pellinen

Willard Pellinen
McLeod County Surveyor
License No. 9626

Date August 22, 1991

OFFICE OF THE COUNTY RECORDER
MCLEOD COUNTY, MINNESOTA.

I hereby certify that this document was filed in this office at 9 o'clock A.M. on the 26th day of Aug 1991.

Carmen Ostlie, County Recorder

By _____, Deputy

Document No. 240528

NORTH QUARTER corner, Section 1, Township 114 North, Range 29 West

Certificate of Location of Government Corner

1855. John Ryan of the General Land Office set a post, deposited charcoal, dug pits and trench, built mound and planted osage orange seeds at the corners of the mound.

November 22, 1971. McCombs Knutson Associated (Dickman Knutson, county surveyor) found a 1½ foot by 1 foot flat stone with a rotted wood stake below the stone. They moved the stone west and set a McLeod County cast iron monument in its place. They took available reference ties.

June 12, 1990. We found the monument in good condition and checked the ties.

We accept the stone and stake found by Knutson as having perpetuated the correct location of the quarter corner. This point is only 2.79 feet north and 1.72 feet west of being on line and split between the section corners.

NORTHEAST corner, Section 1, Township 114 North, Range 29 West

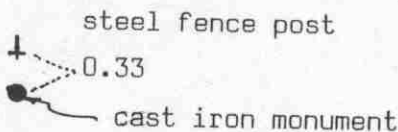
Certificate of Location of Government Corner

SKETCH OF REFERENCE TIES
(NO SCALE)



SECTION 36, T.115, R.29

SECTION 31, T.115, R.28



SECTION 1, T.114, R.29

SECTION 6, T.114, R.28

Statement of evidence relative to this corner location on sheet 2

I hereby certify that this document was prepared by me or under my direct supervision.

Willard Pellinen
Willard Pellinen
McLeod County Surveyor
License No. 9626

Date July 16, 1990

OFFICE OF THE COUNTY RECORDER
MCLEOD COUNTY, MINNESOTA.

I hereby certify that this document was filed in this office at 2 o'clock P.M. on the 23rd day of July, 1990.

Carmen Helie, County Recorder
By _____, Deputy
Document No. 234549

Certificate of Location of Government Corner

This corner was originally set by the government in 1855. John Ryan set a post, deposited charcoal, dug pits and trench, built mound and planged osage orange seeds at the corners of the mound.

1974. Delbert Rieke, Sibley County Surveyor, set a cast iron monument at the corner. He used lost methods to reestablish the corner.

June 2, 1989. We found the cast iron monument in good condition. Only 1 available tie, a steel fence post 0.33 feet north of the monument.